

25 YEARS OF SERVING  
DENTAL PROFESSIONALS

25  
1997 - 2022

2022

USA REGENERATIVE  
PRODUCTS

CITAGENIX

The Regen Company



D I T R O N   D E N T A L  
U S A



## WHO IS CITAGENIX?

Citagenix is a premier supplier of grafting products to dental surgeons, periodontists, and implant dentists across North America. We are a pioneer in offering innovative dental bone grafts, membranes, surgical instruments, regen accessories and related specialized instruments.

Our customers know us for our complete product range and in-depth applications knowledge; our products are known for their clinically-proven efficacy and their superb handling characteristics. As a market leader for 25 years in Canada, we conform to the highest standards of sourcing, manufacturing, labeling, and quality control. Today, we are active and growing in more than 25 countries.

BONE GRAFTS	MEMBRANES	REGEN ACCESSORIES	SPECIALIZED INSTRUMENTS
4-15	16-19	20-22	23

## TO OUR CUSTOMERS AND PARTNERS

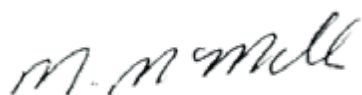
This year Citagenix is celebrating a major milestone - 25 years of serving medical and dental professionals by providing best in class grafting products. From humble beginnings, the Citagenix team has created a company that has a loyal following in North America and partners around the world.

During those 25 years, we have not stopped innovating at Citagenix and in 2022 you can expect to see the launch of new solutions in both our grafting and membrane barrier lines. The first introduction, addressing the need for an economical, time saving extraction socket grafting for the general dentist, is PreservaRidge™ Plug. More information on this solution and the complete portfolio of clinically proven bone regenerative products can be found in the pages that follow.

The Citagenix team has pivoted in the last couple of years finding new ways to support our clinicians and partners. The changing landscape means that we need to work harder to maintain our foundation based on learning the latest techniques and identifying new products.. This drives new initiatives like virtual hands on courses, virtual conferences and an even more robust Knowledge Base articles on our website.

Our team is always there to help you select the specific products you need to assure the best possible outcome for your patients. As it was 25 years ago, we are focused on supporting you with in person visits, and now online with our Web Store and virtually with our Knowledge Base and Live Chat. We look forward to hearing from you and we assure you that your experience will be professional and friction-free. We are grateful for the trust our customers have in Citagenix and take the responsibility that goes with it seriously.

Thank you for your loyalty over the years and thank you for allowing Citagenix to become The Regen Company.



Michael McMillan

President & CEO

[mmcmillan@citagenix.com](mailto:mmcmillan@citagenix.com)



## Allografts

### PentOS OI™ Max

#### ALLOGRAFT

#### *PARTICULATES*

**Osteoinductive Matrix** not diluted by any carriers. Create your customized osteoinductive graft.

#### FEATURES

- Mixed graft can be extruded through a syringe
- Osteoinductive
- Osteoconductive
- pH balanced – non cytotoxic
- Shown to form bone post-sterilization in-vivo
- Resists copious irrigation

#### APPLICATIONS

- An osteoinductive base for composite graft preparation
- Bone defects and sites requiring a high level of osteoinduction

#### MIXING OPTIONS

May be hydrated with saline, blood, BMA, PRP, I-PRF or other biological preparations.

#### AVAILABILITY

0.5 cc, 1.0 cc & 2.5 cc jars

### PentOS OI™ Putty

#### ALLOGRAFT

#### *PUTTY DBM*

**DBM made from 100% Human Bone** without any additional diluent or carriers to diminish its osteoinductive properties.

#### FEATURES

- Osteoinductive
- Osteoconductive
- Excellent handling characteristics
- Resists irrigation
- Sterilized using low-dose gamma irradiation

#### APPLICATIONS

- Periodontal defects
- Implant site development
- Coronal defects around immediate implants
- Extraction site repair
- Implant dehiscence defects
- Sinus lift procedures

#### MIXING OPTIONS

May be used alone or mixed with Raptos® allograft bone and/or Eclipse™ synthetic bone.

#### AVAILABILITY

0.5 cc, 1.0 cc, 2.5 cc & 5.0 cc syringes

### PentOS OI™ Flex

#### ALLOGRAFT

#### *VENEER GRAFTS*

**1 mm thick osteoinductive, Demineralized Cortical Bone Graft.** When hydrated the veneer graft becomes pliable and easily adapts to graft sites.

#### FEATURES

- Osteoinductive demineralized
- Can be fixated with screws, tacks & sutures
- Freeze-dried
- Sterilized using low-dose gamma irradiation
- 5 years shelf life from the date of sterilization

#### APPLICATIONS

- Onlay grafting for the repair of shallow bone defects or bone loss
- To augment thin or missing bone over root form implants
- Orbital floor repair

#### MIXING OPTIONS

May be used alone or in combination with other graft materials.

#### AVAILABILITY

10x10 mm, 15x15 mm & 17x10 mm veneer grafts

# BONE GRAFT OPTIONS

## Allografts

### PentOS OI™ Sponge

#### ALLOGRAFT

#### BONE BLOCKS

**100% Allograft Compressible Bone Matrix** made of demineralized cancellous bone in block form.

#### FEATURES

- Osteoinductive
- Osteoconductive
- Hydrates in minutes
- Contours with the defect
- 5 year shelf life at ambient storage

#### APPLICATIONS

- Missing laterals
- Gutter defects with screw fixation

#### MIXING OPTIONS

Rehydrate with saline, blood, BMA, PRP, I-PRF or other biological preparations.

#### AVAILABILITY

10mm<sup>3</sup> & 12mm<sup>3</sup> blocks

### Raptos®

#### ALLOGRAFT

#### PARTICULATES

Raptos® allograft **Mineralized Bone Grafts** offer an osteoconductive platform for bone regeneration.

Raptos® **Demineralized Particles** offer an osteoinductive boost.

#### FEATURES

- Osteoconductive scaffold
- Mineralized graft material
- Supply a natural framework facilitating the attachment of osteogenic precursor cells
- Remodels completely to host bone

#### APPLICATIONS

- Mineralized component in a composite graft
- As a graft extender
- Osseous defects

#### MIXING OPTIONS

May be used alone or mixed with DBM Putty for osteoinductive potential.

#### AVAILABILITY

Syringes, jars & vials in a variety of sizes and bone types.

### C-Graft Putty™ & C-Blast Putty™

#### ALLOGRAFT

#### PUTTY DBM

**Demineralized Bone Matrix (DBM) in a CMC** - natural, plant derived carrier.

#### FEATURES

- Open bore syringe
- E-beam sterilization
- Double sealed blister packaging
- Room temperature storage

#### C-Blast Putty™:

- With osteoconductive cancellous particles
- Osteoinductive & osteoconductive

#### APPLICATIONS

- Periodontal defects
- Implant site development
- Coronal defects around immediate implants
- Extraction site repair
- Implant dehiscence defects
- Sinus lift procedures

#### MIXING OPTIONS

May be used alone or mixed with Raptos® allograft bone and/or Eclipse™ synthetic bone.

#### AVAILABILITY

0.3cc, 0.5cc, 1.0cc & 3.0cc syringes

## Xenografts

### THE Graft™

XENOGRAFT
PARTICULATES

THE Graft™ **Porous Bone Mineral Matrix** gradually resorbs and is replaced with host bone during the healing process.

#### FEATURES

- Highly porous cancellous structure
- High interconnectivity
- Minimal residual protein without the use of high temperature sintering
- High level of purity
- Demonstrated biocompatibility
- Hydrophilic properties

#### APPLICATIONS

- Ridge augmentation
- Socket preservation
- Sinus lift augmentation

#### MIXING OPTIONS

May be used alone, mixed with the patient's blood, saline or a DBM Putty.

#### AVAILABILITY

**Syringes:** 0.25 cc, 0.5 cc & 1.0 cc

**Vials:** 0.25 g (0.6 cc), 0.5 g (1.2 cc), 1.0 g (2.4 cc) & 2.0 g (4.8 cc)



### CevOss™

XENOGRAFT
PARTICULATES

**Bone Matrix Implant** made of deproteinized bovine bone and indicated in bone regeneration.

#### FEATURES

- High volume of interconnected pores promotes new bone formation and growth
- Promotes osteoblasts bonding and posterior osteoid formation
- Promotes osteogenesis, thanks to its osteoconductive property
- No potential immunological or infectious risks
- Adheres to instrumentation
- Adapts to the cavity shape

#### APPLICATIONS

- Bone defects
- Bone augmentation
- Alveolar ridge augmentation/reconstruction
- Socket filling
- Ridge preservation
- Implantology: implant site preparation, bone defect filling and maxillary sinus lift
- Periodontology: bone defect filling, membrane support during guided tissue regeneration

#### AVAILABILITY

**Vials 250-1000 µm:** 0.5 cc (0.25 g), 1.0 cc (0.5 g), 2.0 cc (1.0 g), 5.0 cc (2.5 g) & 8.0 cc (4.0 g)

**Vials 1000-2000 µm:** 0.5 cc (0.18 g), 1.0 cc (0.35 g), 2.0 cc (0.7 g), 5.0 cc (1.7 g) & 8.0 cc (2.9 g)

# BONE GRAFT OPTIONS

## Synthetic grafts



### PreservaRidge™ Plug

SYNTHETIC

*PLUG*

#### Bone Graft Composite Plug.

PreservaRidge™ Plug is a synthetic plug that mimics natural bone and is made of approximately 80 % mineral particles combined with 20 % Type I collagen from bovine Achilles tendon.

#### FEATURES

- Easy to use
- Takes the shape of defect when hydrated to fill socket
- Mineral particles are contained within the defect site
- More mineral and just as absorbent
  - 80% mineral content - twice the mineral compared to the competition**
    - Lower crystallinity than HA enables optimal turnover
    - Provides vital minerals for remodeling
    - Resorbs completely between 9-12 months
  - Median pore size in mineral is 120 µm - open like cancellous bone**
    - Allows for more blood to be absorbed
    - Space for cells to propagate and remodel

#### APPLICATIONS

Ridge/Socket Preservation

#### AVAILABILITY

10x20 mm & 6x25 mm

### Eclipse™

SYNTHETIC

*PARTICULATES & PUTTY*

#### Resorbable Bone Substitute Granules.

Using the mineral building blocks naturally found in human bone, Eclipse™ goes a step beyond the realm of everyday hydroxyapatite and tricalcium phosphate with its unique combination of micro and macroporosity technology.

#### FEATURES

- Macro and Micro pores allow complete remodeling
- Completely remodels to host bone while preserving volume

#### APPLICATIONS

- Ridge preservation
- Extraction site repair
- Sinus lift procedures
- Ridge augmentation
- Osseous defects
- Periodontal defects

#### MIXING OPTIONS

May be used alone or mixed with DBM Putty for osteoinductive potential.

#### AVAILABILITY

##### Granules

Syringes: 0.5 cc & 1.0 cc (500-1000 µm)

Vials: 0.25 cc, 0.5 cc & 1.0 cc (500-1000 µm)

Vials: 2.0 cc (1000-2000 µm)

##### Putty

Syringes: 0.5 cc & 1.0 cc



# ALLOGRAFTS



## PENTOS OI™ FAMILY

**100% Allograft. Proven to form bone. Every time. It's that simple!**

Post sterilization in-vivo testing on each lot must demonstrate the presence of new bone, bone marrow, osteocytes, cartilage and chondrocytes within 28 days in an athymic rat model otherwise we don't call it PentOS OI™. In-vitro tests of PentOS OI™ have demonstrated native levels of BMP-2 up to 19 times the native levels in the control.

### PentOS OI™ Max

#### Hydratable Inductive Matrix

Osteoinductive matrix not diluted by any carriers. Create your customized osteoinductive graft. pH balanced – non cytotoxic and resists copious irrigation.

Jars (17400023) 0.5 cc, (17400024) 1.0 cc & (17400025) 2.5 cc

### PentOS OI™ Putty

#### DBM Putty

Made from 100% human bone without additional diluent or carrier to diminish its osteoinductive properties. Sterilized using low-dose gamma irradiation.

Syringes (17400027) 0.5 cc, (17400028) 1.0 cc, (17400029) 2.5 cc  
& ( ) 5.0 cc

### PentOS OI™ Flex

#### Flexible Veneer Graft

1 mm thick osteoinductive, demineralized 100% cortical bone veneer graft. When hydrated, it becomes pliable and it easily adapts to graft sites.

(17400020) 10x10 mm, (17400021) 15x15 mm & (17400022) 17x10 mm

### PentOS OI™ Sponge

#### Compressible Bone Matrix

Osteoinductive & Osteoconductive bone matrix made of cancellous and demineralized bone. Hydrates in minutes and contours with the defect.

Bone blocks (17400032) 10 mm<sup>3</sup> & (17400033) 12 mm<sup>3</sup>





# ALLOGRAFTS



## DBM PUTTIES

### C-Graft Putty™

#### Demineralized Bone Matrix (DBM) in CMC

DBM in CMC – a natural, plant derived, carrier for superior handling.

Syringes (17400081) 0.3 cc, (17400082) 0.5 cc, (17400084) 1.0 cc & (17400085) 3.0 cc



### C-Blast Putty™

#### DBM in CMC with Cancellous Particules

Composite graft product that combines osteoinductive DBM and osteoconductive cancellous particles in CMC.

Syringes (17400077) 0.3 cc, (17400078) 0.5 cc, (17400079) 1.0 cc & (17400080) 3.0 cc



## CARBOXYMETHYLCELLULOSE (CMC)

### A polysaccharide hydrogel derived from linters of the cotton seed

- Commonly used in food, cosmetics and pharmaceutical preparations
- Excellent biocompatibility – does not interfere with cell mediated bone formation
- Odourless, tasteless and nontoxic
- High viscosity physiologically inert carrier which maintains its interface at the graft site
- Malleable - can be molded and placed into any shaped defect
- Excellent dimensional stability – does not significantly shrink nor expand
- Will not migrate from the graft site
- Resorbs slowly in harmony with new bone formation allowing for cellular and vascular infiltration
- Haemostatic effect when grafted into a bleeding site
- FDA classifies CMC as GRAS (generally regarded as safe)

# ALLOGRAFTS



## RAPTOS® BONE BLOCKS

### A Natural Scaffold for Bone Regeneration!

Raptos® Cortico-Cancellous bone blocks are instrumental in bone volume regeneration for severe bone atrophy cases that require an increase in initial stability for an implant site. Our cortico-cancellous blocks and wedge combine the stability of a cortical surface with the porosity of a cancellous surface for osteointegration.



Wedge 7x7x10 mm  
(CCBB-07)



Block 6x6x10 mm  
(CCBB-06)



Block 6x12x12 mm  
(CCBB-12)



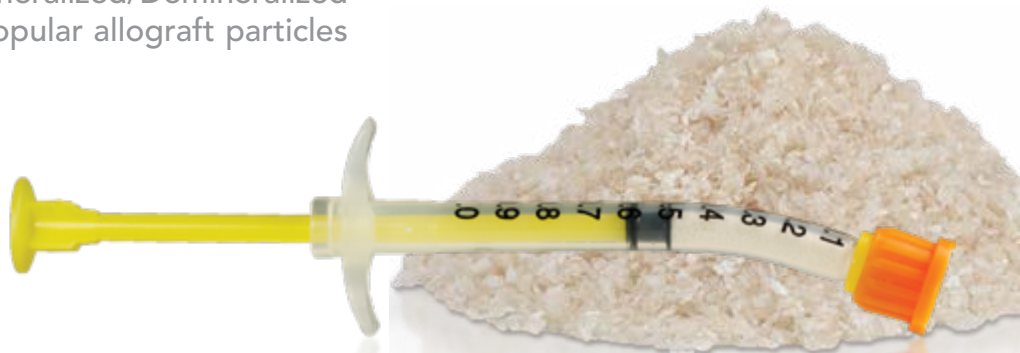
Block 6x12x20 mm  
(CCBB-20)

## RAPTOS® GRANULES

### A Natural Scaffold for Bone Regeneration!

Raptos® Allograft mineralized bone grafts offer an osteoconductive platform for bone regeneration and Raptos® demineralized particles offer an osteoinductive component. Used either alone or as part of a composite bone graft, allograft bone particulates supply a natural framework facilitating the attachment of osteogenic precursor cells.

**Premium Blend** - This Cortical Mineralized/Demineralized blend combines two of the most popular allograft particles used in dentistry.



# ALLOGRAFTS



## Raptos® Granules availability

### Allograft Bone Particulates

Irradiated Bone Particulates offer a natural scaffold for bone regeneration. Osteoconductive scaffold, mineralized graft material & remodels completely to host bone. Available in cortical, cancellous, cortico-cancellous and more in syringes, jars & vials



### RAPTOS® JARS

		0.25 cc	0.5 cc	1.0 cc	2.0 cc	5.0 cc
Cortical	250-1000 µm		COR02J-05	COR02J-10	COR02J-20	
Cancellous	250-1000 µm		CAN02J-05	CAN02J-10	CAN02J-20	CAN02J-50
Cortico-Cancellous	250-1000 µm	CCB02J-02	CCB02J-05	CCB02J-10	CCB02J-20	CCB02J-50

### RAPTOS® VIALS

		0.25 cc	0.5 cc	1.0 cc	2.0 cc	5.0 cc
Cortical	125-850 µm		COR01-05	COR01-10	COR01-20	
Cancellous	250-1000 µm		CAN02-05	CAN02-10	CAN02-20	CAN02-50
Cortico-Cancellous	250-1000 µm	CCB02-02	CCB02-05	CCB02-10	CCB02-20	CCB02-50
Demin. Cortical	125-850 µm		DCB01-05	DCB01-10		
Premium Blend	250-1000 µm		DMC02-05	DMC02-10	DMC02-20	



### RAPTOS® SYRINGES

		0.25 cc	0.5 cc	1.0 cc
Cortical	200-850 µm	COR02S-02	COR02S-05	COR02S-10
Cancellous	200-850 µm	CAN02S-02	CAN02S-05	CAN02S-10
Cortico-Cancellous	200-850 µm	CCB02S-02	CCB02S-05	CCB02S-10
	850-1500 µm			CCB08S-10
Demin. Cortical	200-850 µm	DCB02S-02	DCB02S-05	DCB02S-10
Premium Blend	200-850 µm	DMC02S-02	DMC02S-05	DMC02S-10

# XENOGRAFTS

## THE GRAFT™

### Porous Bone Mineral Matrix

THE Graft™ is designed to mimic the structure of human bone, offering osteoconductive properties to host cell growth and complete remodeling to host bone. The natural structure of the anorganic bone mineral of THE Graft™ demonstrates similar physical and chemical characteristics compared to the mineralized matrix of human bone. THE Graft™ gradually resorbs and is replaced with host bone during the healing process. THE Graft™ is cancellous granules and is sterilized using gamma irradiation.

#### 1. HIGHLY POROUS STRUCTURE WITH HIGH INTERCONNECTIVITY.

Supports absorption of liquids such as blood and leads to incorporation and remodeling.

#### 2. MINIMAL RESIDUAL PROTEIN WITHOUT THE USE OF HIGH TEMPERATURE SINTERING.

The natural interconnectivity is maintained. THE Graft is structurally similar to human bone.

#### 3. HIGH LEVEL OF PURITY.

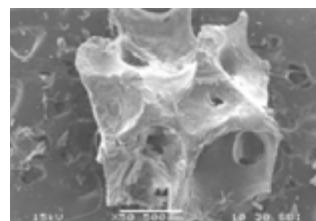
Predictable bone growth with little immunogenic reaction.

#### 4. DEMONSTRATED BIOCOMPATIBILITY.

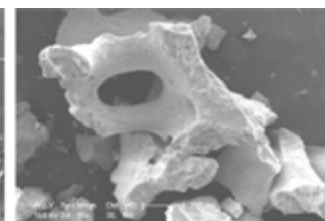
Encourages cell adhesion and supports vital cell growth.

#### 5. THE GRAFT HYDROPHILIC PROPERTIES.

This high wettability positions this material to have advantages in host fluid absorption.



Human bone



THE Graft™

Volume (cc)		0.5 cc		1.0 cc
Syringes	250-1000 μm	17400142		17400143

Weight (grams)		0.25 g	0.5 g	1.0 g
Volume (cc)		0.6 cc	1.2 cc	2.4 cc
Vials	250-1000 μm	17400118	17400116	17400117



# XENOGRAFTS



## CEVOSS™

### Bovine Bone particulates

CevOss™ bone matrix implant is made of deproteinized bovine bone and is indicated in bone regeneration. Thanks to its natural origin, it is chemically and structurally comparable to mineralized cancellous human bone (natural nanocrystalline apatite). The highly purified osteoconductive mineral structure is obtained from natural bovine bone through a manufacturing process that guarantees a 96% phase purity in strict compliance with international standards. CevOss™ is sterilized with gamma-radiation at 25kGy.

### Features & Benefits

- The high volume of interconnected pores promotes new bone formation and growth
- Promotes osteoblasts bonding and posterior osteoid formation
- Promotes osteogenesis, thanks to its osteoconductive property
- No potential immunological or infectious risks
- Adheres to instrumentation
- Adapts to the cavity shape



### Applications

- Implantology: implant site preparation, bone defect filling and maxillary sinus lift
- Periodontology: bone defect filling, membrane support during guided tissue regeneration
- Socket filling post-extraction - ridge preservation
- Bone defects and bone augmentation in general
- Alveolar ridge augmentation/reconstruction



Volume (cc)		0.5 cc	1.0 cc	2.0 cc	5.0 cc	8.0 cc
Weight (grams)		0.25 g	0.5 g	1.0 g	2.5 g	4.0 g
Vials	250-1000 µm	174000150	174000151	174000152	174000153	174000154

Volume (cc)		0.5 cc	1.0 cc	2.0 cc	5.0 cc	8.0 cc
Weight (grams)		0.18 g	0.35 g	0.7 g	1.7 g	2.9 g
Vials	1000-2000 µm	174000155	174000156	174000157	174000158	174000159



**NEW  
PRODUCT**

# SYNTHETIC GRAFTS



## PRESERVARIDGE™ PLUG

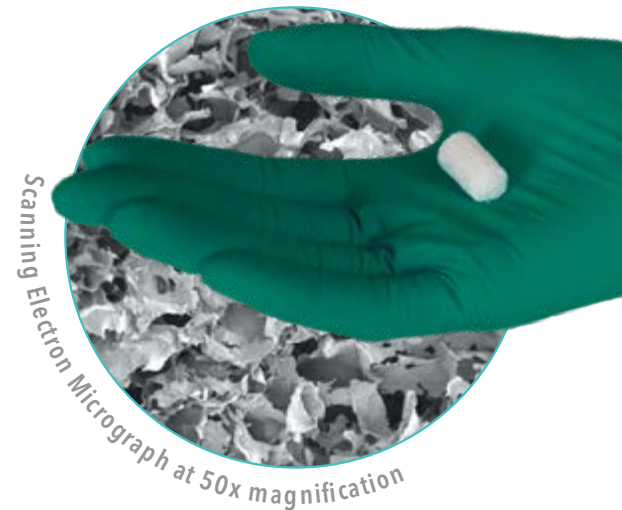
### Bone Graft Composite Plug

PreservaRidge™ Plug is a synthetic plug that mimics natural bone and is made of approximately 80% mineral particles combined with 20% Type I collagen from bovine Achilles tendon. It is specifically designed for use in post extraction treatment to help maintain ridge height and width.

PreservaRidge™ Plug is shaped like the extraction socket and is easily placed to fill the void left by the removal of the tooth root. Its porous structure, mineral content and collagen matrix makes it an ideal environment for healing and bone growth in preparation for subsequent prosthetic treatments.

### Features & Benefits

- Easy to use
  - Takes the shape of defect when hydrated to fill socket
  - Mineral particles are contained within the defect site
  - More mineral and just as absorbent
    - 80% mineral content - twice the mineral compared to the competition
      - Lower crystallinity than HA enables optimal turnover
      - Provides vital minerals for remodeling
      - Resorbs completely between 9-12 months
- Median pore size in mineral is 120  $\mu\text{m}$  - open like cancellous bone
- Allows for more blood to be absorbed
  - Space for cells to propagate and remodel



### Applications

- Ridge/Socket Preservation



### Availability

PreservaRidge™ Plug comes in 2 sizes (posterior/anterior) in boxes of 5.

20x10 mm (17400160)  
& 25x6 mm (17400161)



# SYNTHETIC GRAFTS



## ECLIPSE™ FAMILY

### Completely transforms to Natural Bone!

Using the mineral building blocks naturally found in human bone, Eclipse goes a step beyond the realm of everyday hydroxyapatite (HA) and tricalcium phosphate (TCP) with its unique combination of micro and macroporosity technology. The Eclipse key to balanced bone regeneration is its unique ratio between micro and macro porosity and its unique ratio between HA and  $\beta$ -TCP.

		0.25 cc	0.5 cc	1.0 cc	2.0 cc
Syringes	Putty		17400006	17400007	
	500-1000 $\mu$ m Granules		17400004	17400005	
Vials	500-1000 $\mu$ m Granules	17400000	17400001	17400002	
	1000-2000 $\mu$ m Granules				17400003

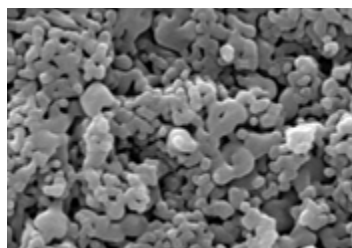


### Eclipse™ Granules

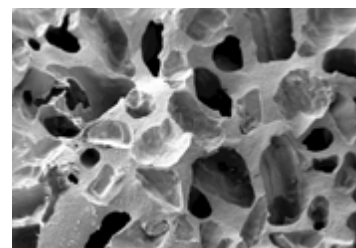
#### Synthetic Resorbable Bone Substitute

A 100% synthetic (20% HA, 80% TCP), cost-effective bone graft matrix used as an alternative to biologic osteoinductive products.

#### 70% OVERALL POROSITY



1/3 microporosity



2/3 macroporosity

### Eclipse™ putty

#### Injectable Synthetic Bone Substitute

Innovative and moldable bone graft, composed of HA,  $\beta$ -TCP and a hydrogel. By combining the complete interconnectivity of Eclipse™ granules with a carrier, the handling properties are greatly enhanced. 40 - 45% Hydrogel (highly diluted HPMC).



## Tissue regeneration membranes

### Neomem® ECM

#### XENOGRAFT

**RESORBABLE  
6 MONTHS**

**Processed Porcine Mesothelial Tissue** in sheet form. Extracellular matrix with a combination of strength and tissue regeneration properties with minimal antigens.

#### FEATURES

- VEGF, FGF and TGF-beta retained in preparation
- Natural structure preserved
- Excellent handling characteristics
- Drapes easily to surgical site
- Natural elasticity characteristics
- 3 year shelf life from date of sterilization

#### APPLICATIONS

- Alveolar ridge reconstruction
- Augmentation around implants
- Provides architecture and protection for bone regeneration and soft tissue aesthetics
- GTR in periodontal defects

#### USE

- Easily trimmed to desired shape
- Either side can be placed towards the soft tissue or bone

#### AVAILABILITY

15x20mm, 20x30mm & 30x40mm

### Neoderm™ ADM

#### ALLOGRAFT

**RESORBABLE  
3-4 MONTHS**

**Acellular Human Dermis Membrane.** Natural elasticity of human skin. Thickness of 0.9-1.6mm.

#### FEATURES

- Minimally processed
- Freeze-dried and sterilized

#### APPLICATIONS

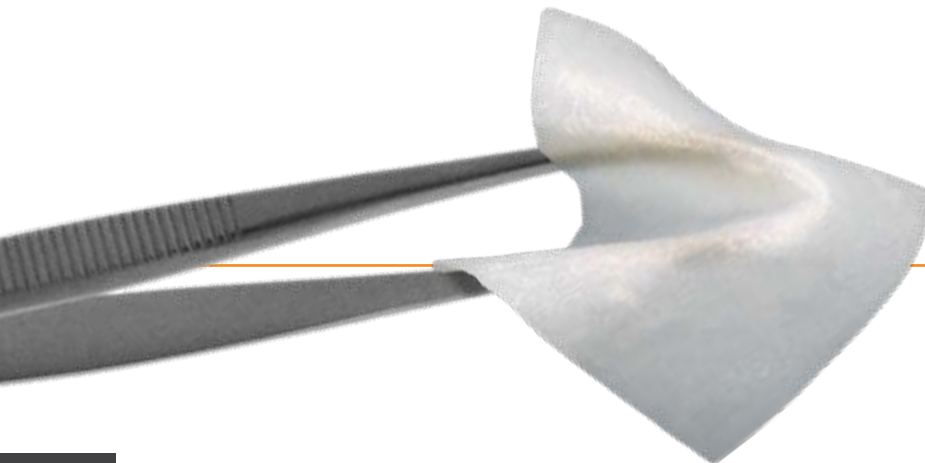
- Replacement of damaged or inadequate tissue
- Repair, reinforcement or supplemental support of soft tissue defects
- 2 years of shelf life at room temperature

#### USE

- Easily trimmed to desired shape
- Can be shaped with scissors or a scalpel

#### AVAILABILITY

(0.9 - 1.6mm thickness) 10x10mm, 20x10mm, 10x40mm & 20x40mm



# MEMBRANE OPTIONS



## Barrier membranes

### Neomem® Xac

#### ALLOGRAFT

**RESORBABLE**  
**8-12 WEEKS**

Amnion-chorion membrane composed of an amnion layer and a chorion layer and together they provide a protective barrier that makes it ideal for multiple dental applications.

#### FEATURES

- Minimally invasive

#### APPLICATIONS

- Socket Preservation
- GTR
- GBR
- Dental Implants
- Sinus Augmentation
- Ridge Augmentation
- Endodontic Applications

#### USE

- No trimming necessary
- May be placed up or down
- No fixation or pre-hydration necessary
- Can be left exposed

#### AVAILABILITY

8x8mm, 10x20mm, 12x12mm,  
15x20mm, 15x25mm & 20x30mm

### Neomem®

#### XENOGRAFT

**RESORBABLE**  
**26-38 WEEKS**

#### Bovine Collagen Membrane.

Neomem® membrane is a Type 1 bovine collagen matrix indicated for use in guided tissue procedures to enhance wound healing.

#### FEATURES

- Higher mechanical strength for membrane stabilization in situ using either sutures or resorbable tacks
- Longer in vivo stability and resorption time, for sustained function
- Optimized flexibility and rigidity for better space maintenance, which allows for desired tissue in-growth
- Room temperature storage

#### APPLICATIONS

- GTR
- GBR

#### USE

- Either side of the Neomem® can be placed towards the soft tissue or bone
- Easily trimmed and placed, wet or dry

#### AVAILABILITY

15x20mm, 20x30mm & 30x40mm

### Neomem® FlexPlus

#### XENOGRAFT

**RESORBABLE**  
**3-4 MONTHS**

#### Porcine Collagen Membrane.

Neomem® FlexPlus is a single layer collagen membrane derived from porcine peritoneum.

#### FEATURES

- High suture pull out strength
- Excellent draping
- Lower inflammation
- Easy handling
- Room temperature storage

#### APPLICATIONS

- GTR
- GBR

#### AVAILABILITY

15x20mm, 20x30mm & 30x40mm

# TISSUE AUGMENTATION

## RESORBABLE



### NEODERM™ ADM

#### Acellular Human Dermis Membrane

These human derived dermal grafts are decellularized to remove cellular components and preserve the biological properties that promote revascularization and repair. 0.9-1.6mm thickness.

(17400139) 10x10 mm, (17400137) 10x20 mm, (17400140) 10x40 mm & (17400138) 20x40 mm

Actual sizes



## RESORBABLE



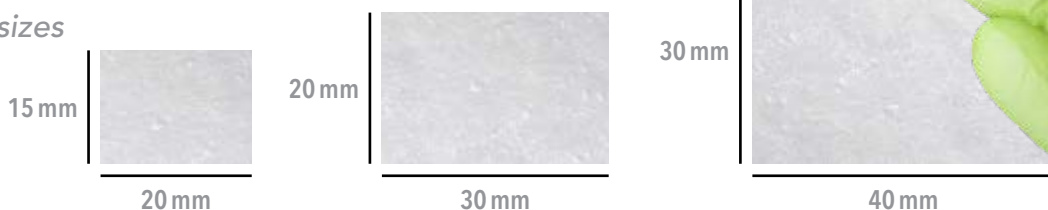
### NEOMEM® ECM

#### Processed Porcine Mesothelial Tissue

Extracellular matrix in sheet form with a combination of strength and tissue regeneration properties with minimal antigens. Because it is more than just collagen, the extra proteins support soft tissue healing and remodeling into natural tissue as the matrix is absorbed.

(17400134) 15x20 mm, (17400135) 20x30 mm & (17400136) 30x40 mm

Actual sizes



# BARRIER MEMBRANES

## RESORBABLE

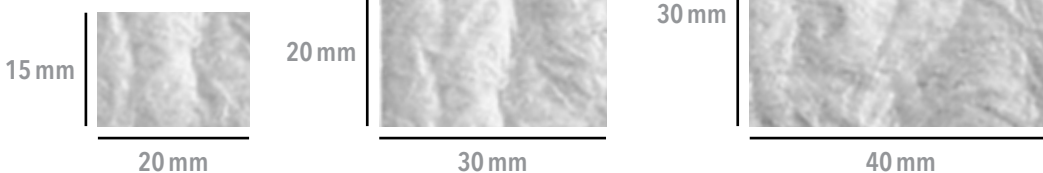
### NEOMEM®

#### Bovine Collagen Membrane

Highly purified type I collagen fibres derived from bovine Achilles tendon. The macromolecular pore size allows vital nutrient transfer while the cell occlusive membrane retards epithelium down growth.

(17400086) 15x20 mm, (17400087) 20x30 mm & (17400088) 30x40 mm

Actual sizes



## RESORBABLE

### NEOMEM® FLEXPLUS

#### Porcine Collagen Membrane

Single layer collagen membrane derived from porcine peritoneum. It hydrates quickly and its handling characteristics make surgical placement easy.

(17400089) 15x20 mm, (17400090) 20x30 mm & (17400091) 30x40 mm

Actual sizes



# SUTURES

## NON-RESORBABLE

### BIOTEX™

#### PTFE (PFOA Free) Suture | Minimal memory, No tangle and Superior handling

Biotex™ Non-Resorbable PTFE Suture is comprised of a single-arm, non-resorbable monofilament suture with a stainless-steel surgical needle connected to the suture. The suture is uncoated, undyed and sterile for single use only, composed of 100% PTFE.

##### 1. Slim reverse cutting needle tip

- Precision slim cut triangular needle for small penetration area and smooth suturing.

##### 2. Strong Attachment

- Advanced technology for strong needle attachment.
- Smooth and firm connection between needle and thread.
- Rapid healing process due to the reduced bleeding from needle insertion.

##### 3. Strong Needle

- 33% higher strengths are required to bend the needle in the same degree compared to other products.
- No worry of a bent needle during suturing due to its rigidity.

##### 4. Suture High pliability (PTFE)

- Easier tying and knotting with less unintended loosening.

Code	USP Size	Suture Length	Needle Length	Circle	Point type
17400124	3-0	45 cm	16 mm	3/8	▽
17400126	3-0	45 cm	19 mm	3/8	▽
17400127	4-0	45 cm	13 mm	3/8	▽
17400128	4-0	45 cm	16 mm	3/8	▽
17400129	4-0	45 cm	19 mm	3/8	▽
17400130	5-0	45 cm	13 mm	3/8	▽
17400131	5-0	45 cm	16 mm	3/8	▽
17400132	4-0	45 cm	13 mm	1/2	⊙



##### 1 Needle holding clip

Designed to hold the needle in place, also allows for secure and easy release of the suture needle from its package.

##### 2 Tab

Allows surgeon to easily grasp and remove the suture needle from its needle holder clip.

##### 3 "Race Track" shape

Designed to prevent suture from entangling, and allows easy release of the suture.

##### 4 Sturdy & Flexible Transparent Cover

Protects and gives clear visibility of the suture and needle. Soft and sturdy cover effectively protect the suture.

# SUTURES

## RESORBABLE

### MONOGLYC™

#### Absorbable Dyed Monofilament suture

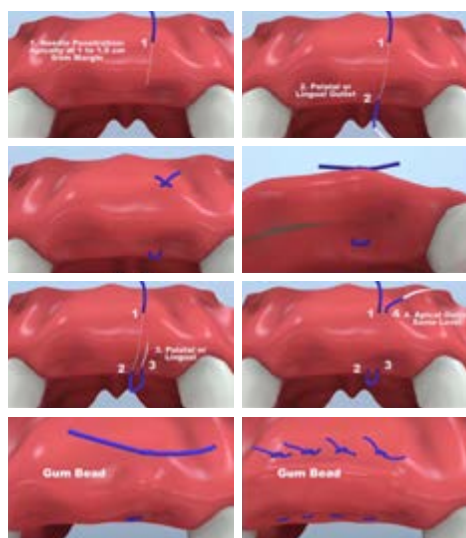
The smooth monofilament surface structures of the Monoglyc™ polymer result in excellent handling and tissue passage properties. Tissue trauma from suturing is virtually non-existent with Monoglyc™, and the monofilament structure prevents bacterial wicking. Monoglyc™'s high quality needle easily allows for atraumatic passage through tissue.

- Stretchy • Enough time to achieve periosteum reattachment • Stable knots • High tear resistance
- Reliable knot security • Maintain 50% tensile strength for 14-28 days • Very supple • Atraumatic tissue passage • Optimal tissue compatibility • No need to be removed • No plaque build up
- Absorbable in approximately 4 weeks (5/0) • Decreased risk of dehiscence

**Ideal suture for the Apical Mattress Technique – A new suture and suturing technique that will help you Remove tension & mobility of the buccal flap.**

- Helps remove tension & mobility of the buccal flap – Decreases soft tissue ischemia – Promotes faster healing & increased soft tissue thickness – Greatly decreases the risk of dehiscence • Faster revascularization of the cortical bone • Faster revascularization of the grafted bone • Prevention of the native bone resorption • Prevention of the bone graft resorption

**SURGICAL TIP:** Monofilament should be cut long (min. 8 mm) otherwise, the threads are hurtful. Shorter threads are stiffer and cause tissue irritation.



Code	USP Size	Suture Length	Needle Length	Circle	Point type	Similar Needle Codes
17400146	4/0	45 cm	18 mm	3/8	DS18	Reverse cutting C6, FS-2 & C-13
17400145	4/0	70 cm	18 mm	3/8	DS18	Reverse cutting C6, FS-2 & C-13
17400147	5/0	45 cm	18 mm	3/8	DS18	Reverse cutting C6, FS-2 & C-13
17400144	5/0	45 cm	16 mm	3/8	DSM16	Premium-cut PC34, PS-3 & p-11
17400148	5/0	70 cm	18 mm	3/8	DS18	Reverse cutting C6, FS-2 & C-13
17400149	6/0	45 cm	13 mm	3/8	DSM13	Premium-cut C3, P-3 & P-13



# WOUND DRESSINGS

RESORBABLE



## NEOPLUG™, NEOCOTE™ & NEOTAPE™

### Porous Collagen Matrices

Our resorbable dental wound dressings are absorbent and porous collagen matrices engineered from purified collagen that is derived from bovine dermis tissue.

- Can be shaped and cut to size
- Individually packed in boxes of 5 units
- Single use and supplied sterile

#### NeoPlug™

**Cylindrical shape that easily adapts to surgical sites.**

- Extraction sites
- Traumatic wounds
- Surgical wounds

(17400016) 10x20 mm



#### NeoCote™

**Thick sponge shape that protects soft tissue.**

- Periodontal surgical wounds
- Oral ulcers (non-infected or viral)
- Denture sores

(17400017) 20x40x3 mm



#### NeoTape™

**Thin tape like design for more intricate uses.**

- Palatal donor site
- Suture sites
- Burns

(17400019) 25x75x1 mm







# 25

1997 - 2022

---

TO LEARN MORE ON OUR WIDE  
SELECTION OF PRODUCTS, VISIT  
US ONLINE AT [CITAGENIX.COM](http://CITAGENIX.COM)

---

# CITAGENIX

The Regen Company



D I T R O N   D E N T A L  
U S A

Ditron Dental USA  
555 Corporate Drive, Suite 160  
Ladera Ranch, CA 92694

[www.ditrondentalusa.com](http://www.ditrondentalusa.com) | Corporate office: 844-454-8766