

D I T R O N  D E N T A L U S A

PRODUCT CATALOG

*“BUT QUALITY OF WORK CAN BE EXPECTED ONLY THROUGH
PERSONAL SATISFACTION, DEDICATION AND ENJOYMENT. IN OUR
PROFESSION, PRECISION AND PERFECTION ARE NOT A DISPENSABLE
LUXURY, BUT A SIMPLE NECESSITY.”*

NIKLAUS WIRTH



*“What Ditron does...they make the most accurate machined parts in the world,
for aerospace, for high performance cars such as Tesla, Maserati or BMW **AND**
they make the most accurate, well-fitting dental implant.”*

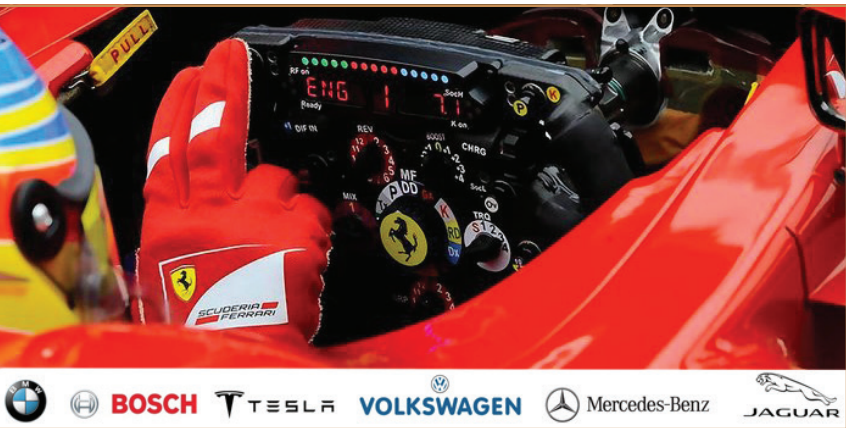
Ole T. Jensen, DDS, MS
Founder, Ditron Dental USA

STEP INTO OUR WORLD OF PRECISION...



Ditron Group, a precision machining world leader and the parent company for Ditron Dental and Ditron Dental USA was established in Israel in 1968.

The result of over 50 years of experience in the design, production and delivery of ultra-precise mission critical products for the aerospace, aeronautical and automotive industries has now been applied to dental implants.



Our products have been installed in some of the most extreme and challenging environments in which failure is unacceptable, including Tesla, Daimler, Jaguar, Ferrari F-1, Robert Bosch Corp, BMW and Mercedes-Benz. With state-of-the-art technology and in-depth process control, we attain production at single micron level accuracies and have been one of the leading companies in the design, production and JIT “Just in Time” delivery of ultra-precise mission critical products.

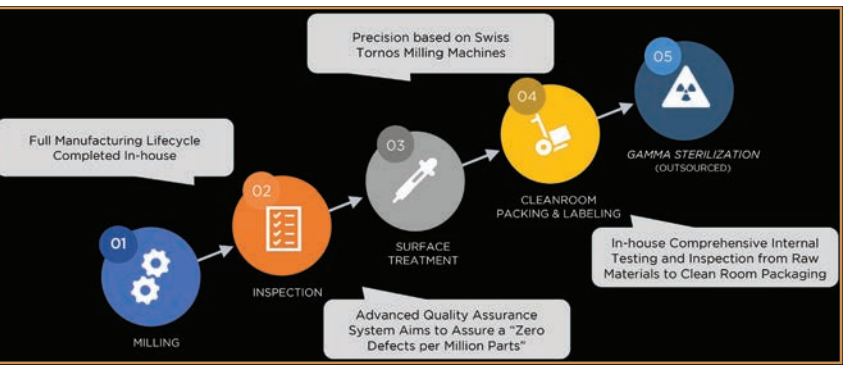


The Ditron Dental USA dental implant system was designed as a 3rd generation system, providing a unique combination of outstanding precision with unequalled clinical versatility.

The implant system includes the Molecular Precision Implant MPI™, the One-Piece Implant OPI™ and our flagship Ultimate Precision Implant ULT™ with the patented reverse concave neck and micro-threads that together with the MolecuLock™ implant-abutment connection virtually eliminate component micro-movement and marginal bone loss associated with peri-implantitis.

The MolecuLock™ connection incorporates tight manufacturing tolerances in three critical parameters: Mating Tolerances, Roundness and Surface Roughness.

The Ditron Dental USA dental implant system is the clinician’s choice for dentists who demand exceptional Precision, Design, Quality, Versatility and Innovation (PDQVI) at a Responsible price with a Lifetime Warrant.



We believe a multi-disciplinary approach is the best catalyst for innovation and have teamed engineers, micro-machining specialists and top-notch clinicians to drive our research and development of high-end dental implant-based solutions.

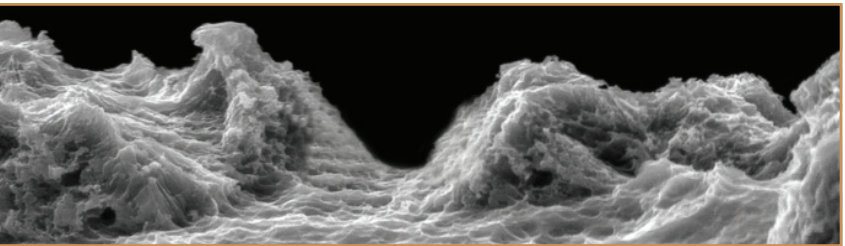
Unlike most dental implant companies, Ditron Dental is able to manufacture at less than 3 microns because they keep everything in house with the exception of Gamma Sterilization.

The long-term success of our dental implant system, allows the dental team to reconstruct a patient’s teeth as close as possible to their natural dentition. We provide patients with a safe and reliable solution to improve their well-being and quality of life, both functionally and esthetically “same day”.

MILLING, INSPECTION, SURFACE, CLEANROOM & CERTIFICATION



All implant system components are made of biocompatible medical Grade 23 Ti-Alloy (Ti6Al4V ELI). The specific Ti-Alloy used by Ditron Dental was chosen due to its superior properties i.e., high strength to weight ratio, very high corrosion resistance, high modulus of elasticity and its excellent osseointegration capabilities. The properties include Tensile Strength (860 MPa Minimum), Elongation (10%), O₂ Content (0.13% Maximum) and Excellent Biocompatibility.



All dental implants are Al₃O₂ blasted and double thermally acid-etched, creating a micro-macro morphology for assisted and accelerated osseointegration. High-purity cleaning is introduced to ensure no foreign particles remain on the dental implant surface. The success or failure of new bone growth is directly linked to the surface morphology and surface chemistry together with the effective removal of contaminants.



All dental implants, prosthetic components and instruments undergo a comprehensive internal testing and inspection process. This advanced quality assurance system aims to assure a Zero-PPM “Zero Defects per Million Parts”. Outstanding precision and exceptional quality are an essential part of our corporate DNA.

The dental implants, prosthetic components and instruments are then sent to our ISO 14644-1 “Class 7” compliant cleanroom facilities for packaging. The cleanroom has particle counts of less than 1 per million/m³.

Ditron Dental is certified under EN ISO 9001:2008, SN EN ISO 13485:2012 MDD 93/42/EEC Annex II and is authorized to use the CE mark on all Ditron Dental products. All products are 510 (k) cleared by the FDA. All rights are reserved. Warning: Only a licensed dentist should use these products.



DENTAL IMPLANTS



ULTIMATE PRECISION IMPLANT ULT™...



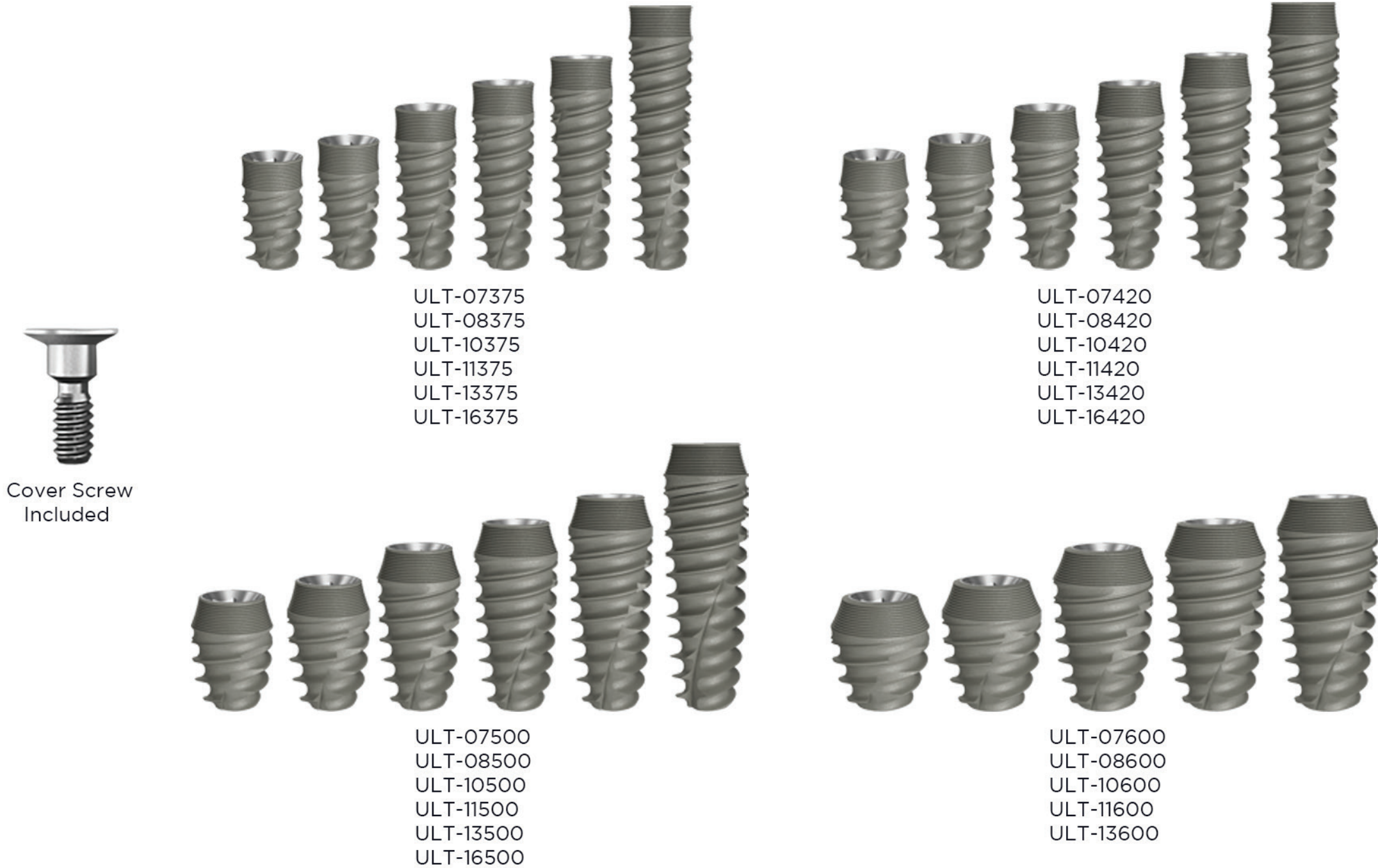
An additional 1 mm must be added to the drill length to account for the angled cutting tip.

A countersink should be used if the Type I/II Bone protocol is not adequate to fully seat the implant without exceeding the recommended insertion torque.

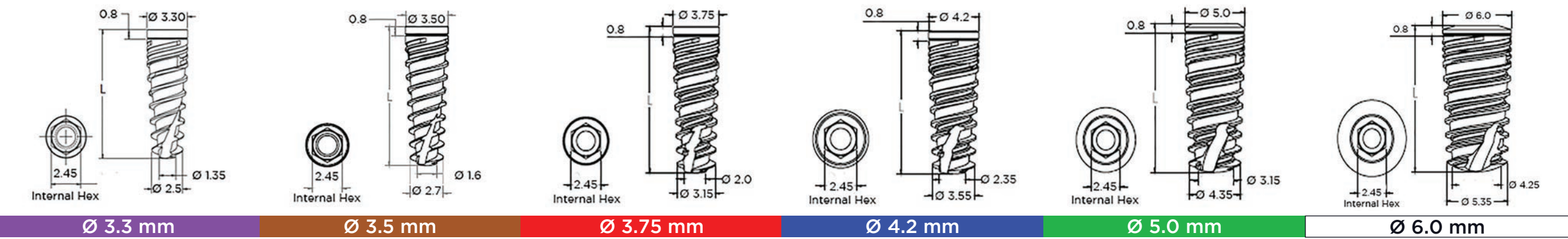
INSERTION TORQUE: 60 Ncm for implants diameter 3.75 mm and above and 45 Ncm for implants diameter 3.5 mm and 3.3 mm.

ULT™ DENTAL IMPLANTS Ø 3.75 - 6 mm & LENGTH 7 - 16 mm

IMPLANTS & COVER SCREWS MANUFACTURED FROM BIOCOMPATIBLE MEDICAL GRADE 23 TI-ALLOY (Ti6AL4V ELI)



MOLECULAR PRECISION IMPLANT MPI™...



MECHANICAL STRESS TESTING: Ø 3.3 mm

- Static: Average of 773 N
- Dynamic: 5 Million Cycles with Fatigue Limit of 320 N
- Maximum: Max Endured Load of 1,072 N



An additional 1 mm must be added to the drill length to account for the angled cutting tip.

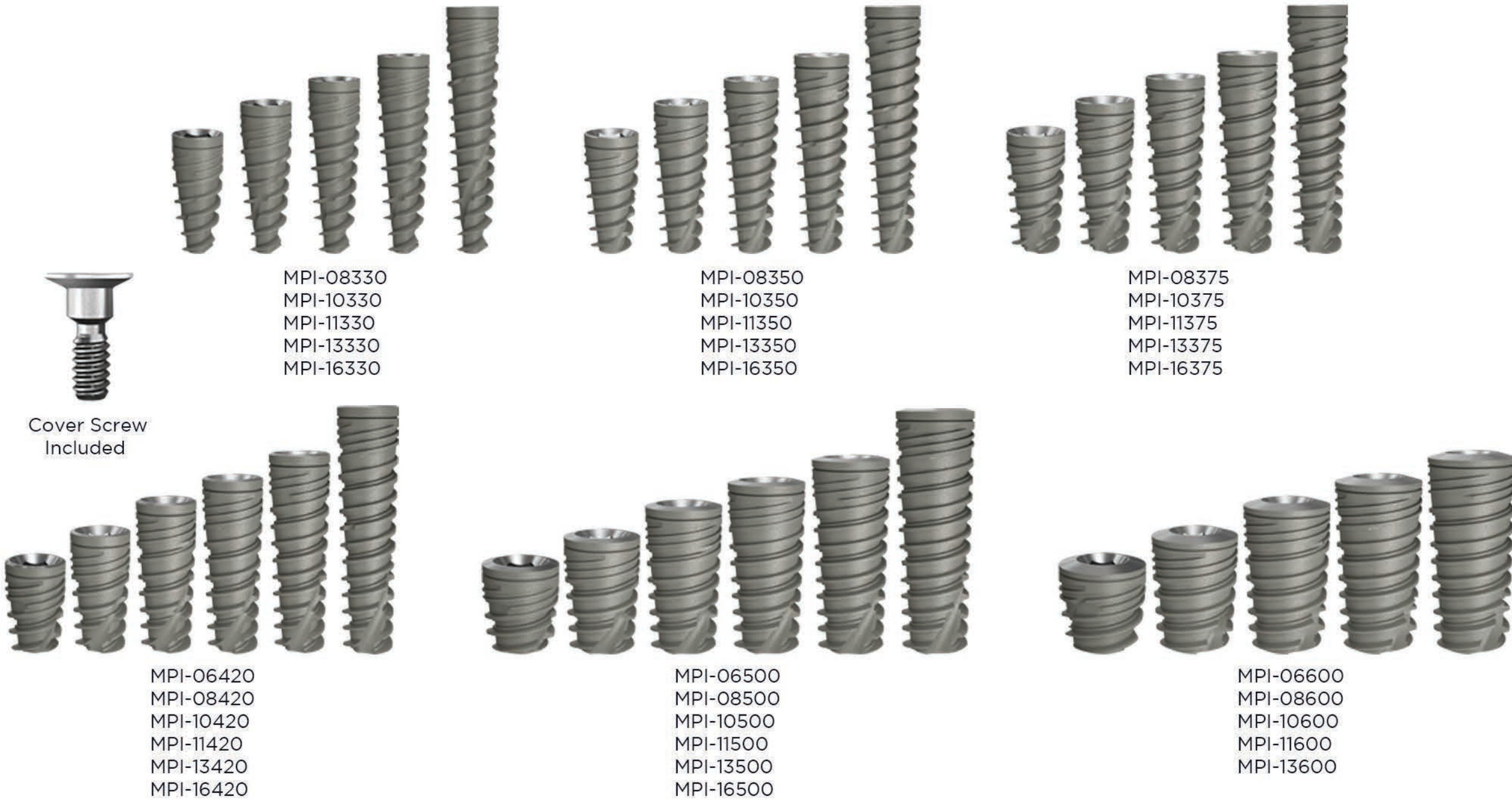
A countersink should be used if the Type I/II Bone protocol is not adequate to fully seat the implant without exceeding the recommended insertion torque.

INSERTION TORQUE: 60 Ncm for implants diameter 3.75 mm and above and 45 Ncm for implants diameter 3.5 mm and 3.3 mm.

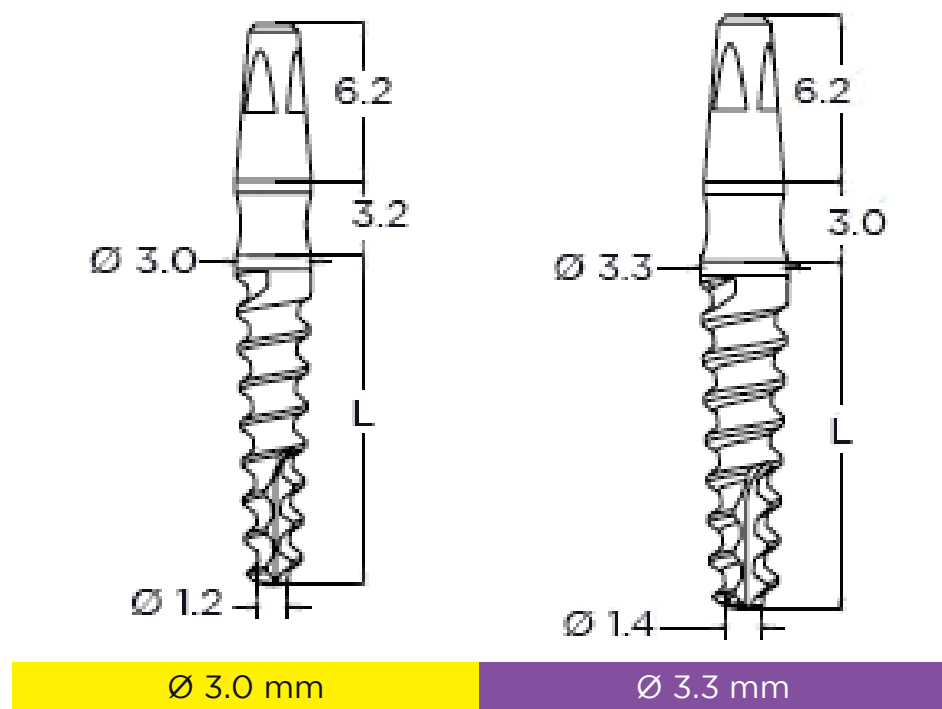
	Bone Type I & II	RPM	Bone Type III & IV	RPM
Ø 3.3 mm	Ø 1.9 mm	1200-1500	Ø 1.9 mm	1200-1500
	Ø 2 mm	900-1200	Ø 2 mm	900-1200
	Ø 2.8 mm	500-700		
Ø 3.5 mm	Ø 1.9 mm	1200-1500	Ø 1.9 mm	1200-1500
	Ø 2 mm	200-400	Ø 2 mm	900-1200
	Ø 2.8 mm	500-700	Ø 2.8 mm	500-700
	Ø 3.2 mm	200-400		
Ø 3.75 mm	Ø 1.9 mm	1200-1500	Ø 1.9 mm	1200-1500
	Ø 2 mm	900-1200	Ø 2 mm	900-1200
	Ø 2.8 mm	500-700	Ø 2.8 mm	500-700
	Ø 3.2 mm	200-400		
Ø 4.2 mm	Ø 1.9 mm	1200-1500	Ø 1.9 mm	1200-1500
	Ø 2 mm	900-1200	Ø 2 mm	900-1200
	Ø 2.8 mm	500-700	Ø 2.8 mm	500-700
	Ø 3.2 mm	400-700	Ø 3.2 mm	400-700
	Ø 3.8 mm	200-400		
Ø 5.0 mm	Ø 1.9 mm	1200-1500	Ø 1.9 mm	1200-1500
	Ø 2 mm	900-1200	Ø 2 mm	900-1200
	Ø 2.8 mm	500-700	Ø 2.8 mm	500-700
	Ø 3.2 mm	400-700	Ø 3.2 mm	400-700
	Ø 3.8 mm	400-600	Ø 3.8 mm	400-600
	Ø 4.5 mm	200-400		
Ø 6.0 mm	Ø 1.9 mm	1200-1500	Ø 1.9 mm	1200-1500
	Ø 2 mm	900-1200	Ø 2 mm	900-1200
	Ø 2.8 mm	500-700	Ø 2.8 mm	500-700
	Ø 3.2 mm	400-700	Ø 3.2 mm	400-700
	Ø 3.8 mm	400-600	Ø 3.8 mm	400-600
	Ø 4.5 mm	400-600	Ø 4.5 mm	400-600
	Ø 5 mm	300-500	Ø 5 mm	300-500
	Ø 5.5 mm	200-400		

MPI™ DENTAL IMPLANTS Ø 3.3 - 6 mm & LENGTH 6 - 16 mm

IMPLANTS & COVER SCREWS MANUFACTURED FROM BIOCOMPATIBLE MEDICAL GRADE 23 TI-ALLOY (Ti6AL4V ELI)



ONE-PIECE IMPLANT OPI™...



Every OPI implant is provided with a plastic carrier for easy handling and removal from the titanium sleeve. A TSQK-200340 OPI Short Hand & Ratchet Key Driver (21 mm long) is required for final implant placement

	Bone Type I & II		Bone Type III & IV	
		RPM		RPM
Ø 3.3 mm	Ø 1.9 mm	1200-1500	Ø 1.9 mm	1200-1500
	Ø 2 mm	900-1200	Ø 2 mm	900-1200
	Ø 2.5 mm	700-900		
Ø 3.5 mm	Ø 1.9 mm	1200-1500	Ø 1.9 mm	1200-1500
	Ø 2 mm	900-1200	Ø 2 mm	900-1200
	Ø 2.5 mm	700-900	Ø 2.5 mm	700-900
	Ø 2.8 mm	400-700		

OPI™ DENTAL IMPLANTS & ANALOG

IMPLANTS MANUFACTURED FROM BIOCOMPATIBLE MEDICAL GRADE 23 TI-ALLOY (Ti6Al4V ELI)

ANALOG MANUFACTURED FROM HIGH GRADE STAINLESS STEEL 316



PROSTHETIC COMPONENTS



HEALING ABUTMENTS

ABUTMENTS MANUFACTURED FROM BIOCOMPATIBLE MEDICAL GRADE 23 TI-ALLOY (TI6AL4V ELI)

ABUTMENT TORQUE
30 Ncm

STANDARD HEALING ABUTMENTS



CHC-2012
Ø 4.6 mm
CH 2 mm



CHC-2013
Ø 4.6 mm
CH 3 mm



CHC-2014
Ø 4.6 mm
CH 4 mm



CHC-2015
Ø 4.6 mm
CH 5 mm



CHC-2016
Ø 4.6 mm
CH 6 mm



CHC-2017
Ø 4.6 mm
CH 7 mm

NON-ENGAGED CYLINDRICAL CONNECTION

HEALING ABUTMENTS

ABUTMENTS MANUFACTURED FROM BIOCOMPATIBLE MEDICAL GRADE 23 TI-ALLOY (TI6AL4V ELI)

ABUTMENT TORQUE
30 Ncm

ANATOMIC HEALING ABUTMENTS



HC-1033
Ø 3.8 mm
CH 3 mm



HC-1035
Ø 3.8 mm
CH 5 mm

NON-ENGAGED CYLINDRICAL CONNECTION



HC-1023
Ø 6 mm
CH 3 mm



HC-1025
Ø 6 mm
CH 5 mm

NON-ENGAGED CYLINDRICAL CONNECTION



HC-1012
Ø 4.6 mm
CH 2 mm



HC-1013
Ø 4.6 mm
CH 3 mm



HC-1014
Ø 4.6 mm
CH 4 mm



HC-1015
Ø 4.6 mm
CH 5 mm



HC-1016
Ø 4.6 mm
CH 6 mm



HC-1017
Ø 4.6 mm
CH 7 mm

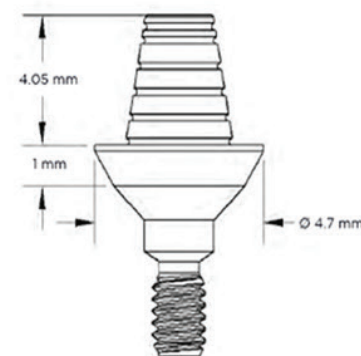
NON-ENGAGED CYLINDRICAL CONNECTION

TEMPORARY ABUTMENTS

ABUTMENTS MANUFACTURED FROM BIOCOMPATIBLE MEDICAL GRADE 23 TI-ALLOY (Ti6AL4V ELI)

ABUTMENT TORQUE
30 Ncm

ONE PIECE TEMPORARY ABUTMENTS



TAB-7001
Ø 4.7 mm
CH 1 mm

TAB-7002
Ø 4.7 mm
CH 2 mm

TAB-7003
Ø 4.7 mm
CH 3 mm

TAB-7004
Ø 4.7 mm
CH 4 mm

TAB-7005
Ø 4.7 mm
CH 5 mm

TAB-7007
Ø 4.7 mm
CH 7 mm

NON-ENGAGED CYLINDRICAL CONNECTION

PLASTIC SLEEVE SET FOR TEMPORARY FABRICATION



TAB-7008
HARD STANDARD & SOFT

IMPRESSION COPINGS & ANALOGS

IMPRESSION COPINGS & ANALOGS MANUFACTURED FROM HIGH GRADE STAINLESS STEEL 316

DENTAL IMPLANT & MULTI-UNIT ABUTMENT
CLOSED TRAY IMPRESSION COPINGS
INCLUDES 16 mm SHORT SCREW (TRS-3050)

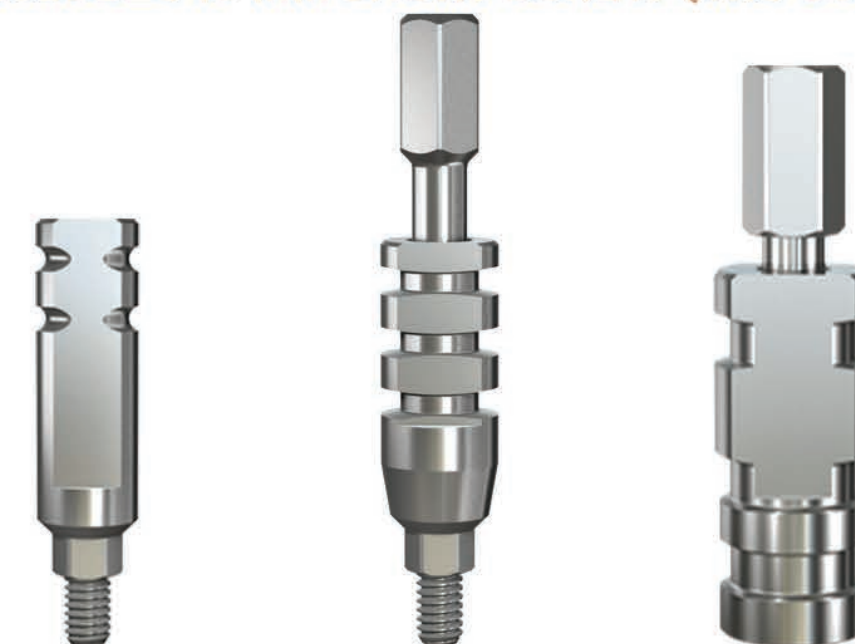


TRC-3030
Ø 3.8 mm
L 12 mm

TRC-3020
Ø 4.5 mm
L 8 mm

MUP-9140
MULTI-UNIT

DENTAL IMPLANT & MULTI-UNIT ABUTMENT
OPEN TRAY IMPRESSION COPINGS
INCLUDES 16 mm SHORT SCREW (TRS-3050)



TRO-3030
Ø 3.8 mm
L 12 mm

TRO-3010
Ø 4.5 mm
L 11 mm

MUP-9141
MULTI-UNIT

DENTAL IMPLANT & MULTI-UNIT ABUTMENT ANALOGS



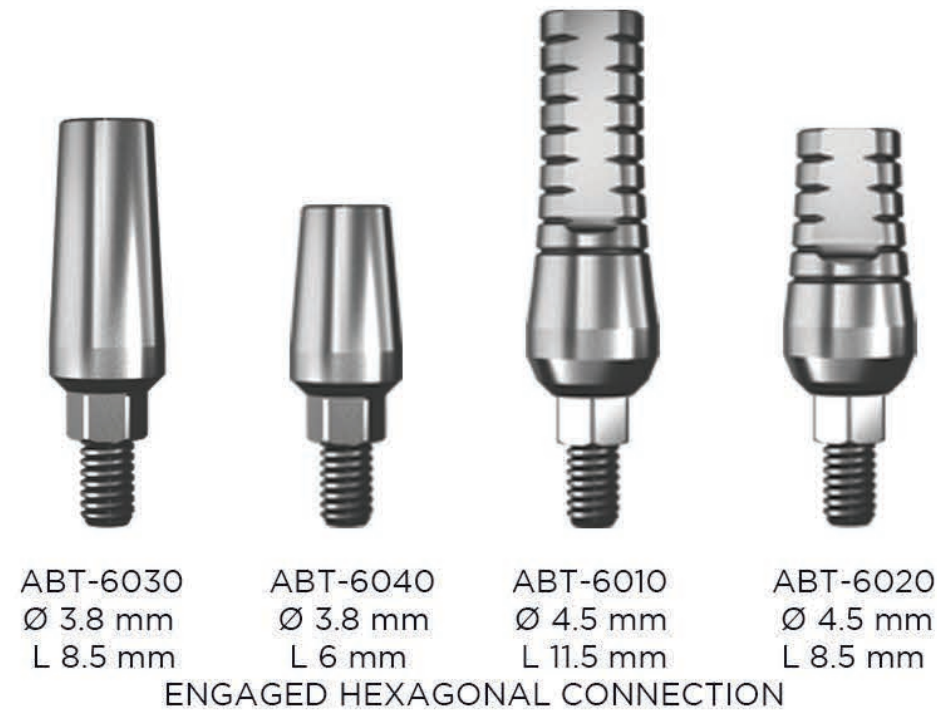
AN-2010
IMPLANT ANALOG

MUP-9137
MULTI-UNIT ABUTMENT ANALOG

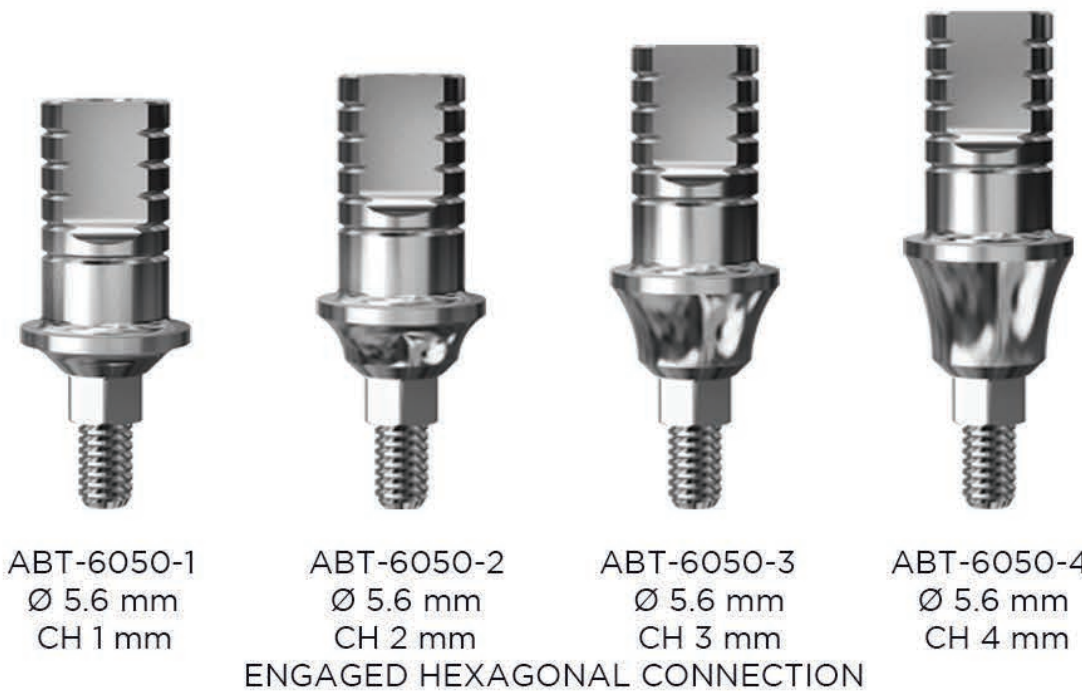
STRAIGHT LAB PREPABLE & ANATOMIC ABUTMENTS FOR CEMENTED RESTORATIONS
ABUTMENTS & SCREWS MANUFACTURED FROM BIOCOMPATIBLE MEDICAL GRADE 23 TI-ALLOY (Ti6AL4V ELI)

ABUTMENT TORQUE
30 Ncm

**STRAIGHT LAB PREPABLE
ABUTMENT SCREW INCLUDED 8.3 mm (ABTS-2000)**



**STRAIGHT ANATOMIC
ABUTMENT SCREW INCLUDED 8.3 mm (ABTS-2000)**

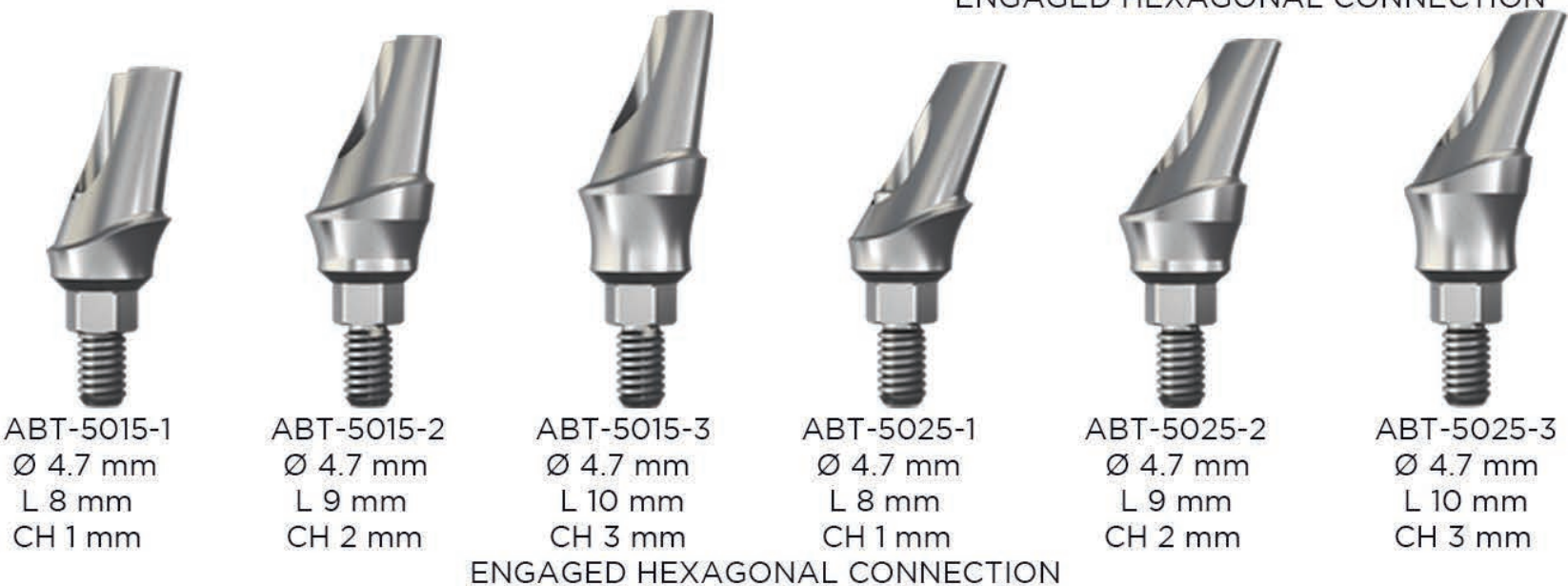
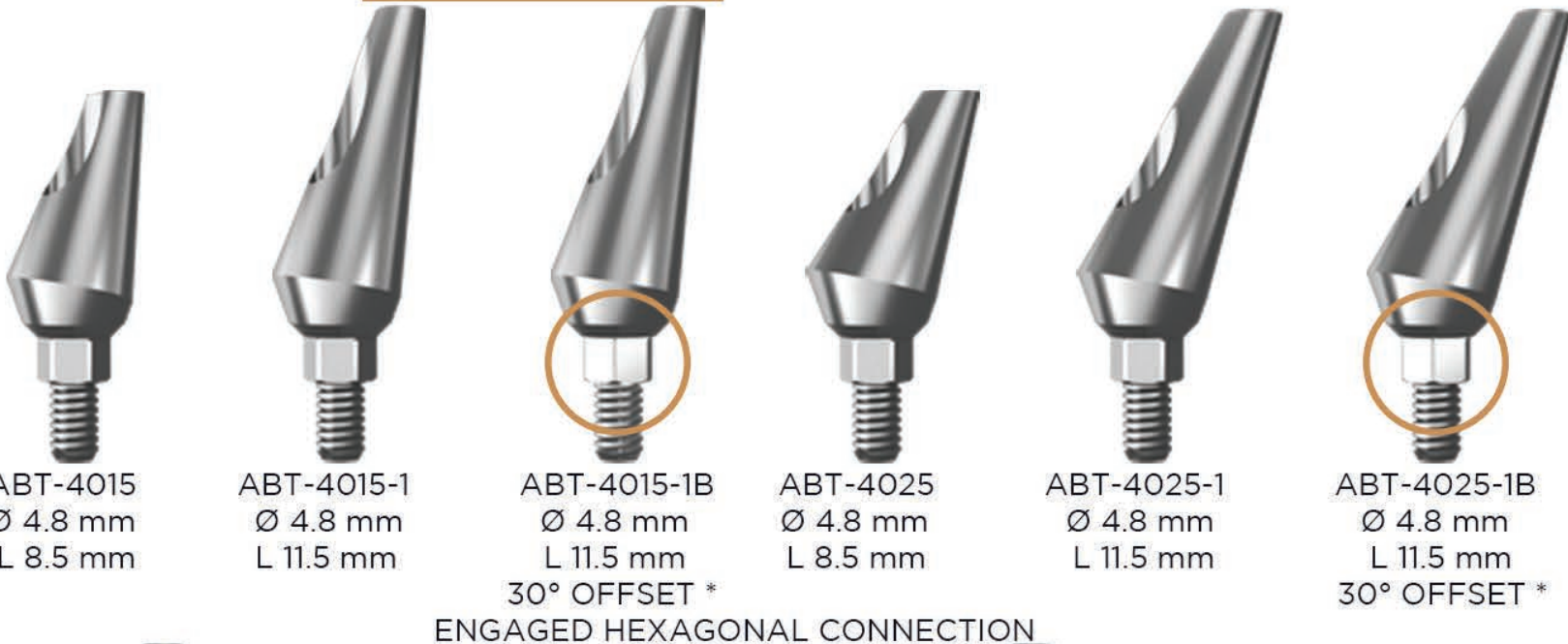


**ANGULATED LAB PREPABLE & ANGULATED ANATOMIC ABUTMENTS FOR
SINGLE AND MULTI-UNIT CEMENTED RESTORATIONS**
ABUTMENTS & SCREWS MANUFACTURED FROM BIOCOMPATIBLE MEDICAL GRADE 23 TI-ALLOY (Ti6AL4V ELI)

ABUTMENT TORQUE
30 Ncm

**15° & 25° ANGULATED
LAB PREPABLE TI-ABUTMENTS
ABUTMENT SCREW INCLUDED
8.3 mm (ABTS-2000)**

* The Offset allows you to place the abutment
in 12 positions vs. the normal 6 positions.



**15° & 25° ANGULATED
ANATOMIC TI-ABUTMENTS
ABUTMENT SCREW INCLUDED
8.3 mm (ABTS-2000)**

STRAIGHT CASTING ABUTMENTS FOR SINGLE AND MULTI-UNIT CEMENTED & SCREW-RETAINED RESTORATIONS

ABUTMENT SCREWS MANUFACTURED FROM BIOCOMPATIBLE MEDICAL GRADE 23 TI-ALLOY (Ti6AL4V ELI)

ABUTMENT TORQUE
30 Ncm

PLASTIC BURNOUT INSTRUCTIONS

- Set the burnout temperature per the instructions of the casting metal supplier
- Keep the ring mold at burnout temperature for 1 hour minimum
- Cast as you would normally with a room temperature cool down

STRAIGHT PLASTIC CASTING ABUTMENTS ABUTMENT SCREW INCLUDED 8.3 mm (ABTS-2000)



CAP-H10ST
L 10.5 mm
CH 1 mm
HEX



CAP-H20ST
L 11.5 mm
CH 2 mm
HEX



CAP-H30ST
L 12.5 mm
CH 3 mm
HEX



CAS-C10ST
L 11 mm
CH 1 mm
CYLINDRICAL



CAS-H10ST
L 11 mm
CH 1 mm
HEX

STRAIGHT CrCo CASTING ABUTMENTS ABUTMENT SCREW INCLUDED 8.3 mm (ABTS-2000)



CAC-C10ST
L 11 mm
CH 1 mm
CYLINDRICAL



CAC-H10ST
L 11 mm
CH 1 mm
HEX

CrCo BURNOUT INSTRUCTIONS

- Burnout material: POM Polyoxymethylene
- Set the burnout temperature per the instructions of the casting metal supplier
- Keep the ring mold at burnout temperature for 1 hour minimum
- Do not overheat metal casting by staying in the range of the casting metal company to avoid porosity
- Use CrCo Metal Alloy
- Cast as you would normally with a room temperature cool down



CAT-C10ST
L 11 mm
CH 1 mm
CYLINDRICAL



CAT-H10ST
L 11 mm
CH 1 mm
HEX

STRAIGHT TI-ALLOY CASTING ABUTMENTS ABUTMENT SCREW INCLUDED 8.3 mm (ABTS-2000)

Ti-Alloy BURNOUT INSTRUCTIONS

- Burnout material: POM Polyoxymethylene
- Set the burnout temperature per the instructions of the casting metal supplier
- Keep the ring mold at burnout temperature for 1 hour minimum
- Do not overheat metal casting by staying in the range of the casting metal company to avoid porosity
- Use Ti-Alloy
- Cast as you would normally with a room temperature cool down

ANGULATED PLASTIC CASTING ABUTMENTS FOR SINGLE AND MULTI-UNIT CEMENTED RESTORATIONS

ABUTMENT SCREWS MANUFACTURED FROM BIOCOMPATIBLE MEDICAL GRADE 23 TI-ALLOY (Ti6AL4V ELI)

ABUTMENT TORQUE
30 Ncm

15° ANGULATED PLASTIC CASTING ABUTMENTS ABUTMENT SCREW INCLUDED 8.3 mm (ABTS-2000)



CAP-H1015
L 9.9 mm
CH 1 mm
ENGAGED HEXAGONAL CONNECTION



CAP-H2015
L 10.9 mm
CH 2 mm
ENGAGED HEXAGONAL CONNECTION



CAP-H3015
L 11.9 mm
CH 3 mm
ENGAGED HEXAGONAL CONNECTION

PLASTIC BURNOUT INSTRUCTIONS

- Set the burnout temperature per the instructions of the casting metal supplier
- Keep the ring mold at burnout temperature for 1 hour minimum
- Cast as you would normally with a room temperature cool down

25° ANGULATED PLASTIC CASTING ABUTMENTS ABUTMENT SCREW INCLUDED 8.3 mm (ABTS-2000)



CAP-H1025
L 8.5 mm
CH 1 mm
ENGAGED HEXAGONAL CONNECTION



CAP-H2025
L 9.5 mm
CH 2 mm
ENGAGED HEXAGONAL CONNECTION



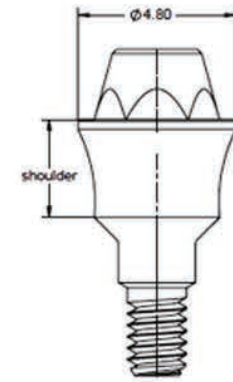
CAP-H3025
L 10.5 mm
CH 3 mm
ENGAGED HEXAGONAL CONNECTION

STRAIGHT MULTI-UNIT ABUTMENTS FOR SCREW-RETAINED RESTORATIONS

ABUTMENTS & SCREWS MANUFACTURED FROM BIOCOMPATIBLE MEDICAL GRADE 23 TI-ALLOY (Ti6AL4V ELI)

ABUTMENT TORQUE 30 Ncm
PROSTHETIC SCREW TORQUE 15 Ncm

ONE PIECE STRAIGHT MULTI-UNIT ABUTMENTS PROSTHETIC SCREW INCLUDED (MUS-9170)



MUA-10ST
Ø 4.8 mm
CH 1 mm



MUA-20ST
Ø 4.8 mm
CH 2 mm



MUA-30ST
Ø 4.8 mm
CH 3 mm



MUA-40ST
Ø 4.8 mm
CH 4 mm



MUA-50ST
Ø 4.8 mm
CH 5 mm



NON-ENGAGED CYLINDRICAL CONNECTION

MULTI-UNIT TEMPORARY ABUTMENT HEALING CAPS & PROSTHETIC SCREW



MUP-9160
INCLUDES
MUS-9170



MUP-9180
CYLINDRICAL



MUP-9181
CONICAL



MUS-9170
PROSTHETIC
SCREW

MUPS-9181
HEALING CAP SCREW
INCLUDED WITH HEALING CAP

PLASTIC BURNOUT SLEEVE PROSTHETIC SCREW INCLUDED (MUS-9170)

PLASTIC BURNOUT INSTRUCTIONS

- Set the burnout temperature per the instructions of the casting metal supplier
- Keep the ring mold at burnout temperature for 1 hour minimum
- Cast as you would normally with a room temperature cool down



MUS-9170
PROSTHETIC
SCREW



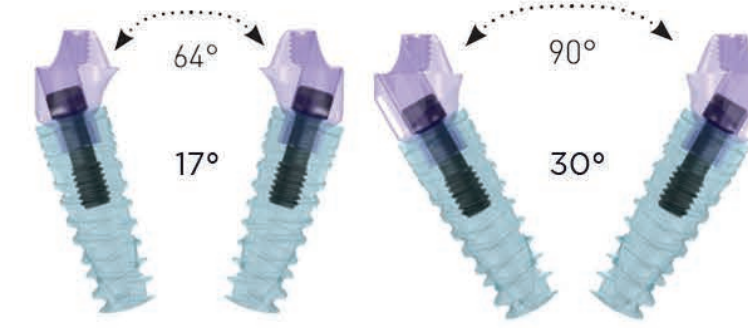
SRA-8131
CONICAL

ANGULATED MULTI-UNIT ABUTMENTS FOR SCREW-RETAINED RESTORATIONS

ABUTMENTS & SCREWS MANUFACTURED FROM BIOCOMPATIBLE MEDICAL GRADE 23 TI-ALLOY (Ti6AL4V ELI)

ABUTMENT TORQUE 30 Ncm
PROSTHETIC SCREW TORQUE 15 Ncm

17° & 30° ANGULATED MULTI-UNIT ABUTMENTS ABUTMENT SCREW INCLUDED (MUAS-2002) PROSTHETIC SCREW INCLUDED (MUS-9170)



DIVERGENCE ANGLES POSSIBLE



MUA-0217
17°
CH 2 mm



MUA-0317
17°
CH 3 mm



MUA-0330
30°
CH 3 mm



MUA-0430
30°
CH 4 mm

ENGAGED HEXAGONAL CONNECTION



MULTI-UNIT TEMPORARY ABUTMENT HEALING CAPS & PROSTHETIC SCREW



MUP-9160
INCLUDES
MUS-9170



MUP-9180
CYLINDRICAL



MUP-9181
CONICAL



MUS-9170
PROSTHETIC
SCREW

MUPS-9181
HEALING CAP SCREW
INCLUDED WITH HEALING CAP

PLASTIC BURNOUT SLEEVE PROSTHETIC SCREW INCLUDED (MUS-9170)

PLASTIC BURNOUT INSTRUCTIONS

- Set the burnout temperature per the instructions of the casting metal supplier
- Keep the ring mold at burnout temperature for 1 hour minimum
- Cast as you would normally with a room temperature cool down



MUS-9170
PROSTHETIC
SCREW



SRA-8131
CONICAL

CAD/CAM DIGITAL WORKFLOW

ABUTMENTS & SCREWS MANUFACTURED FROM BIOCOMPATIBLE MEDICAL GRADE 23 TI-ALLOY (TI6AL4V ELI)

SCAN ABUTMENTS & SCAN BODY (NO POWDER REQUIRED)

ABUTMENT SCREW INCLUDED

8.3 mm (ABTS-2000)

PROSTHETIC SCREW INCLUDED (MUS-9170)

ABUTMENT TORQUE	PROSTHETIC SCREW TORQUE
30 Ncm	15 Ncm



SBTI-3810
Ø 3.8 mm
L 10 mm
IMPLANT

SBTI-3612
Ø 3.6 mm
L 12 mm
IMPLANT

MUSB-4807
MULTI-UNIT

SBDY-8200
TI-BASE



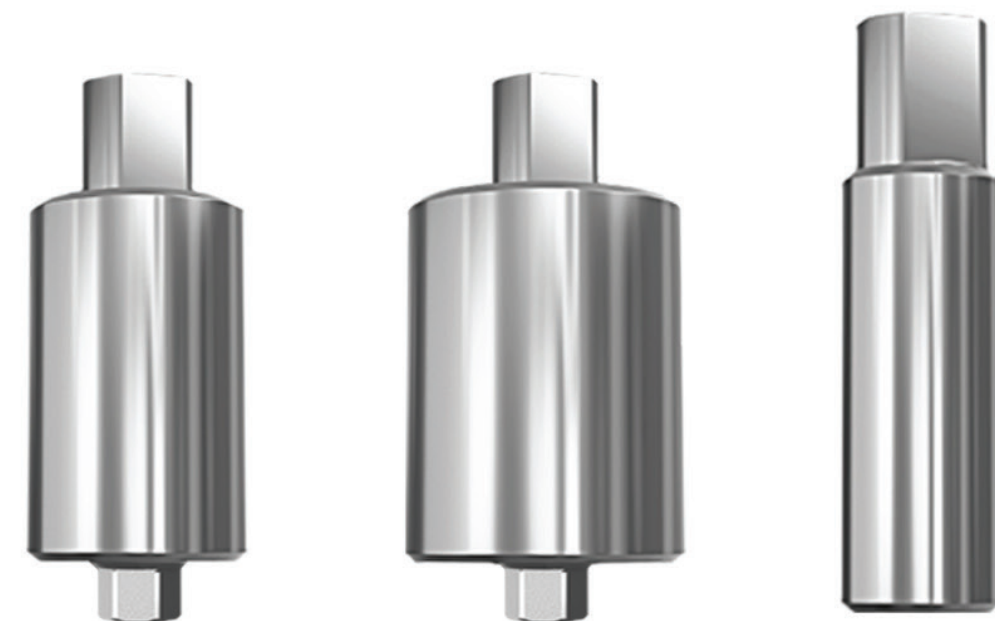
IDA-2030
IMPLANT

MUDA-2040
MULTI-UNIT

SDA-8040
REPLACEMENT SCREW

IMPLANT & MULTI-UNIT
DIGITAL ANALOGS

IMPLANT & MULTI-UNIT
PRE-MILLED TI-BLANKS
ABUTMENT SCREW INCLUDED 8.3 mm (ABTS-2000)
PROSTHETIC SCREW INCLUDED (MUS-9170)
FITS NT TRADING FIXTURE HOLDER



BLKT-8220-9
Ø 9 mm
IMPLANT
HEX

BLKT-8220-12
Ø 12 mm
IMPLANT
HEX

BLKMU-8220-6
Ø 6 mm
MULTI-UNIT

CAD/CAM DIGITAL WORKFLOW

ABUTMENTS & SCREWS MANUFACTURED FROM BIOCOMPATIBLE MEDICAL GRADE 23 TI-ALLOY (TI6AL4V ELI)

ABUTMENT TORQUE	PROSTHETIC SCREW TORQUE
30 Ncm	15 Ncm

IMPLANT TI-BASES
ABUTMENT SCREW INCLUDED 8.3 mm (ABTS-2000)



SBDY-8200
TI-BASE
NO POWDER REQUIRED



SBDY-8200
ON
TI-BASE



TBCL-8231-06
CH 0.6 mm

TBCL-8231-15
CH 1.5 mm

TBCL-8231-25
CH 2.5 mm

NON-ENGAGED CYLINDRICAL CONNECTION



TBHX-8230
CH 0.6 mm

TBHX-8230-15
CH 1.5 mm

TBHX-8230-25
CH 2.5 mm

ENGAGED HEXAGONAL CONNECTION

MULTI-UNIT TI-BASES
PROSTHETIC SCREW INCLUDED (MUS-9170)



TBMU-8245
CH 0.65 mm

TBMU-8235
CH 2.5 mm

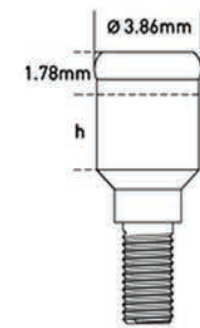
MUS-9170
PROSTHETIC
SCREW

OVERDENTURE ABUTMENTS

ABUTMENTS & SCREWS MANUFACTURED FROM BIOCOMPATIBLE MEDICAL GRADE 23 TI-ALLOY (Ti6AL4V ELI)

ABUTMENT TORQUE
30 Ncm

LIBERATOR® OVERDENTURE ABUTMENTS



LIB-ABT10 LIB-ABT20 LIB-ABT30 LIB-ABT40 LIB-ABT50
NON-ENGAGED CYLINDRICAL CONNECTION



LIB-PACK



LIB-LAB



LIB-SPACER



LIB-TCAP



LIB-KEY



LIB-CAP96



LIB-CAP97



LIB-CAP99



LIB-TR
LIBERATOR
TRANSFER



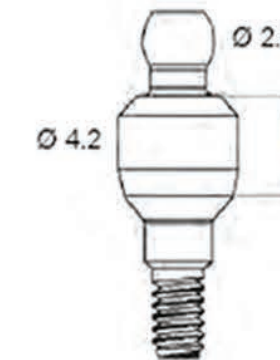
LIB-ANA01
LIBERATOR
RETENTION
ANALOG

OVERDENTURE ABUTMENTS

ABUTMENTS & SCREWS MANUFACTURED FROM BIOCOMPATIBLE MEDICAL GRADE 23 TI-ALLOY (Ti6AL4V ELI)

ABUTMENT TORQUE
30 Ncm

OVERDENTURE BALL ATTACHMENT ABUTMENTS



BAL-10005 BAL-10020 BAL-10030 BAL-10040 BAL-10050 BAL-10060
NON-ENGAGED CYLINDRICAL CONNECTION



BAL-DSK



BAL-MC

NO
PHOTO

BAL-SCH



BAL-SCN



BAL-SCS



MUB-9237
BALL SCREW
MULTI-UNIT

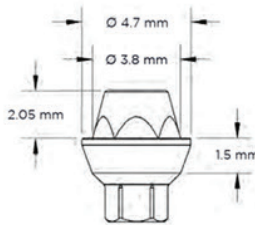
LEGACY STRAIGHT ABUTMENTS FOR
SCREW-RETAINED RESTORATIONS

ABUTMENTS & SCREWS MANUFACTURED FROM BIOCOMPATIBLE MEDICAL GRADE 23 TI-ALLOY (Ti6AL4V ELI)

ABUTMENT TORQUE
30 Ncm

LEGACY SCREW-RETAINED TI-ABUTMENTS
ABUTMENT SCREW INCLUDED
(SRAS-8005-1, SRAS-8015-1 & SRAS-8025-1)

PLASTIC BURNOUT SLEEVES
NO SCREW INCLUDED
USE ABUTMENT SCREWS
(SRAS-8005-1, SRAS-8015-1
& SRAS-8025-1)



SRA-8005
Ø 4.8 mm
CH 0.5 mm
ENGAGED HEXAGONAL CONNECTION

SRA-8015
Ø 4.8 mm
CH 1.5 mm
ENGAGED HEXAGONAL CONNECTION

SRA-8025
Ø 4.8 mm
CH 2.5 mm
ENGAGED HEXAGONAL CONNECTION

SRAS-8005-1
L 10.5 mm

SRAS-8015-1
L 11.5 mm

SRAS-8025-1
L 12.5 mm

PLASTIC BURNOUT INSTRUCTIONS

- Set the burnout temperature per the instructions of the casting metal supplier
- Keep the ring mold at burnout temperature for 1 hour minimum
- Cast as you would normally with a room temperature cool down



SRA-8030
HEX

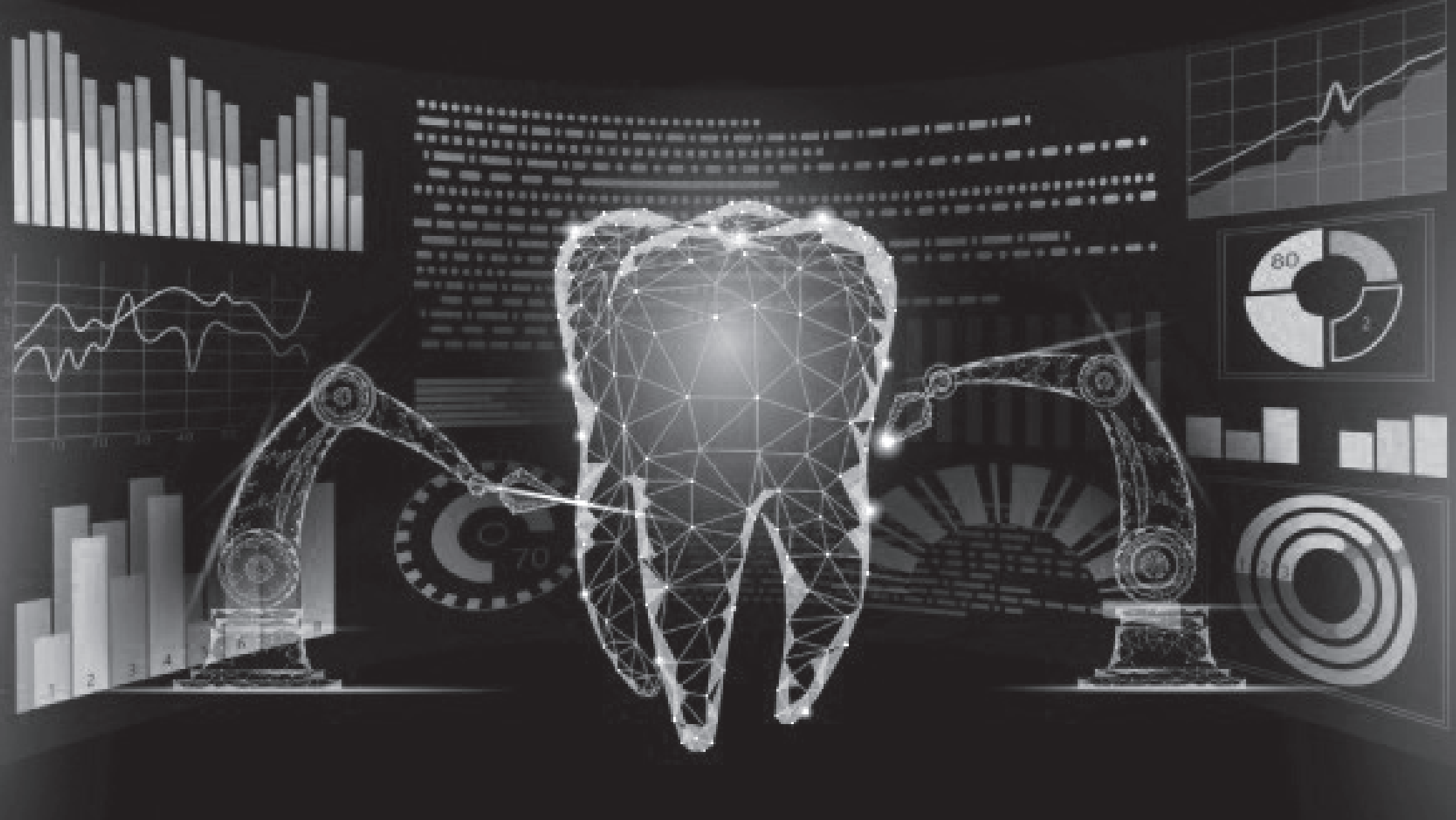


SRA-8031
CONICAL

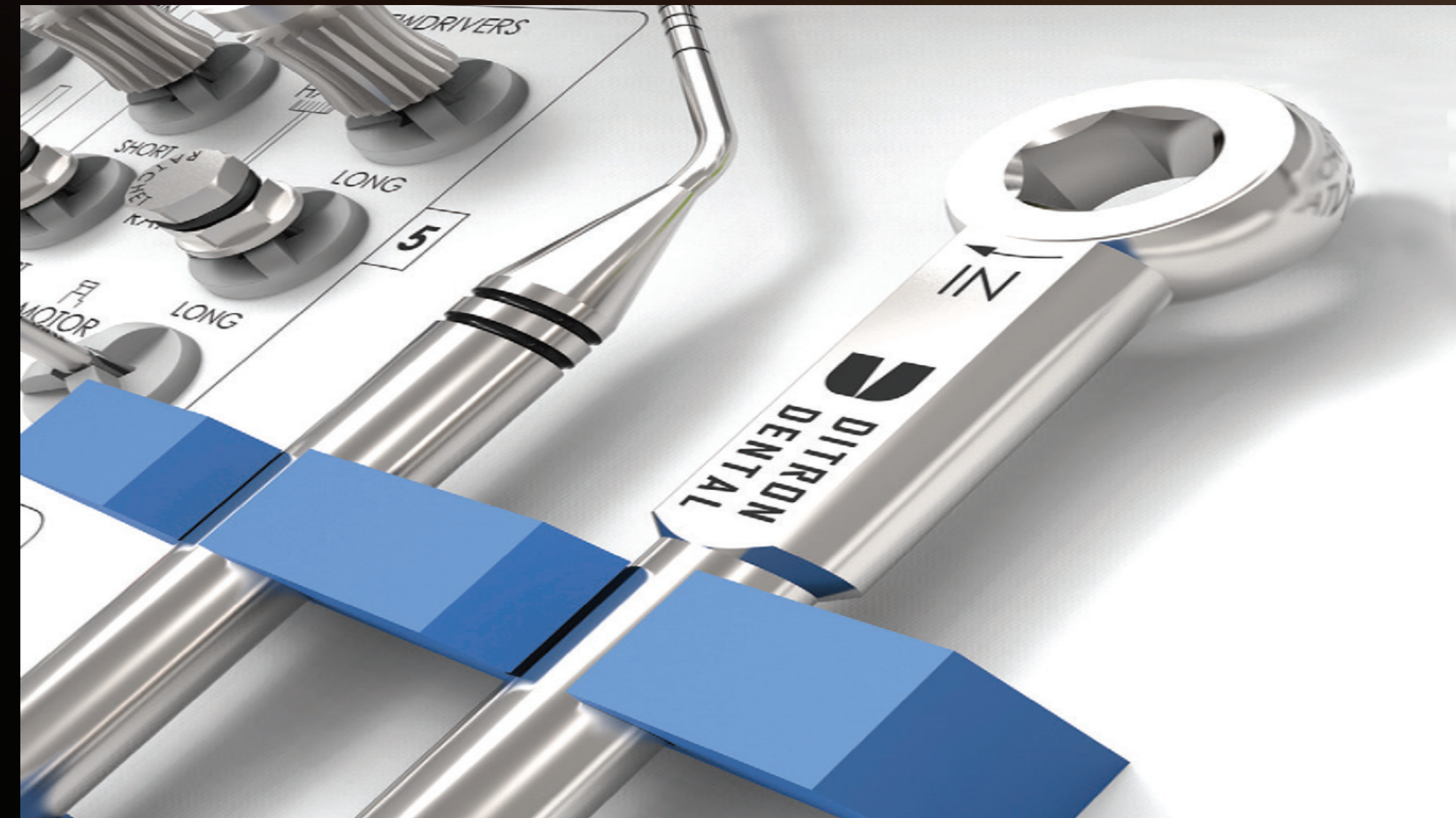


SRA-8032
ROUND

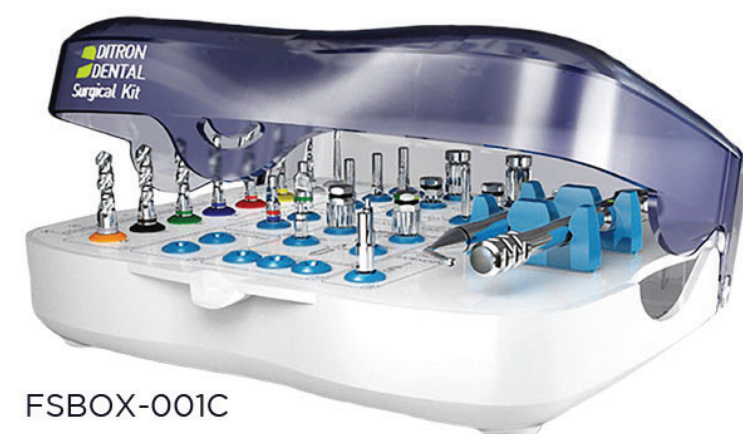
FUTURE PRODUCT DEVELOPMENT...



SURGICAL KITS & PROSTHETIC INSTRUMENTS



Full Surgical Carbon Drills Kit



FSBOX-001C

Mini Surgical Kit



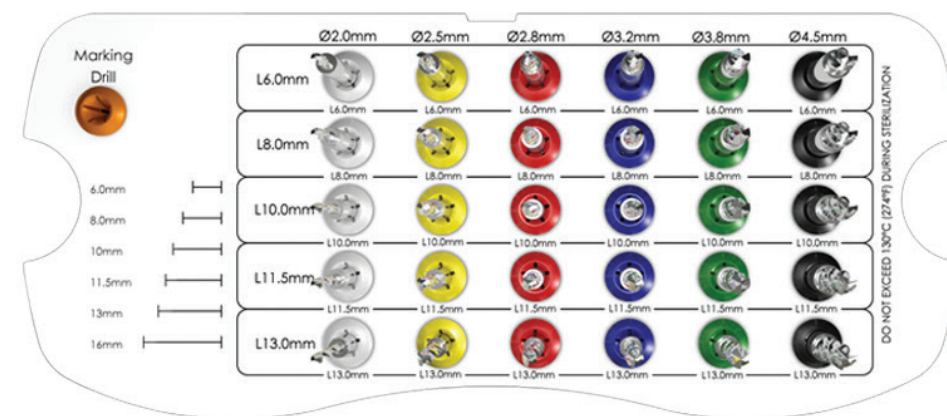
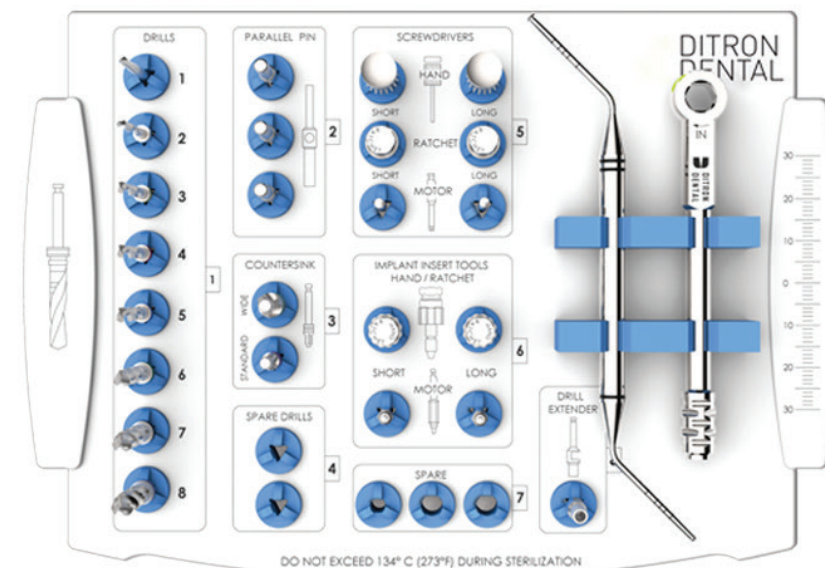
MSBOX-002

Full Drill Stopper Kit



DISKIT

SURGICAL KITS



Carbon Drill Stopper Tube



DC-TUBE

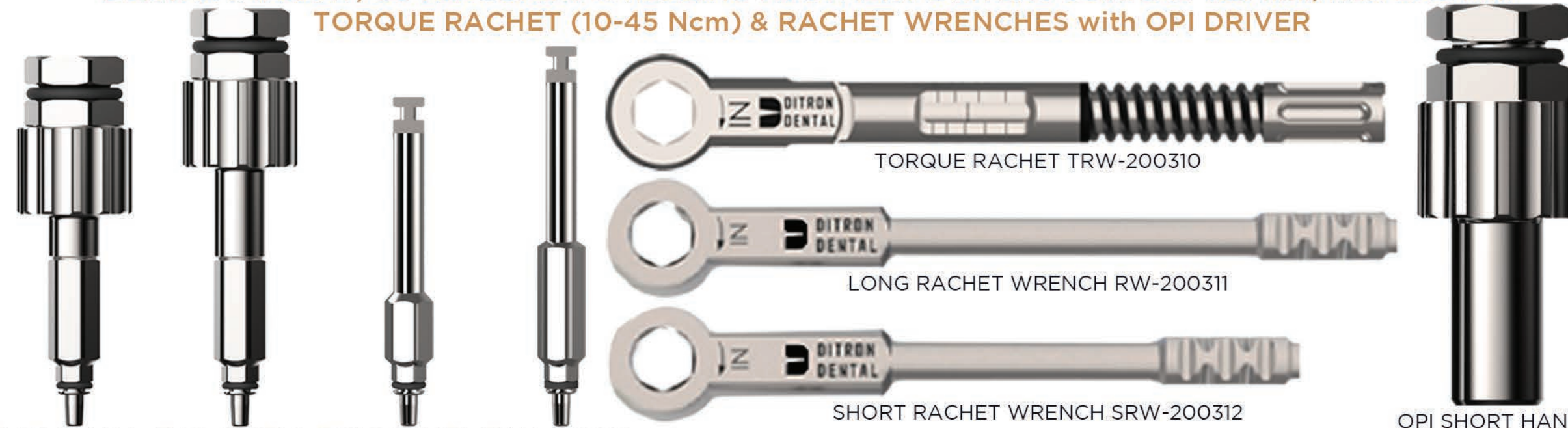
Surgical Carbon Drill Tube



MMBOX-003C

SURGICAL & PROSTHETIC INSTRUMENTS

DENTAL IMPLANT, COVER SCREW & HEALING ABUTMENT DRIVERS CONICAL 1.25 mm/HEX 2.45 mm
TORQUE RACHET (10-45 Ncm) & RACHET WRENCHES with OPI DRIVER



THKS-200290

THKL-200300

TMAS-200250

TMAL-200260

TORQUE RACHET TRW-200310

LONG RACHET WRENCH RW-200311

SHORT RACHET WRENCH SRW-200312

OPI SHORT HAND &
RACHET KEY TSQK-200340

ABUTMENT DRIVERS HEX 1.25 mm & STRAIGHT MULTI-UNIT DRIVER



THSS-200210

THSL-200220

TMAS-200270

TMAL-200280

TRAS-200230

TRAL-200240

TMUA-200350

DENTAL IMPLANT INSERTION TORQUE
45-60 Ncm DEPENDING ON DIAMETER

ABUTMENT TORQUE
30 Ncm

2-STAGE SURGERY
COVER SCREWS
20 Ncm

PROSTHETIC SCREW TORQUE
15 Ncm

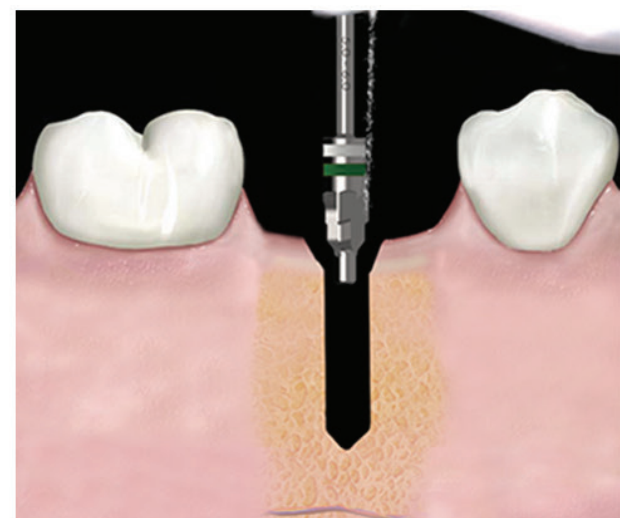
SURGICAL CARBON COATED DRILLS

Tissue Punch



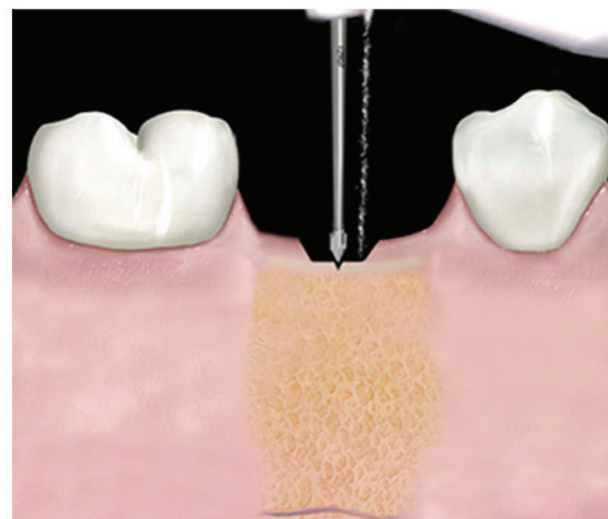
DRTP-300300 Ø 3 mm
DRTP-300400 Ø 4 mm
DRTP-300450 Ø 4.5 mm
DRTP-300500 Ø 5 mm

Countersink



DRCS-300510 Ø 3.75/4.2 mm
DRCW-300520 Ø 5/6 mm

Marking Drill



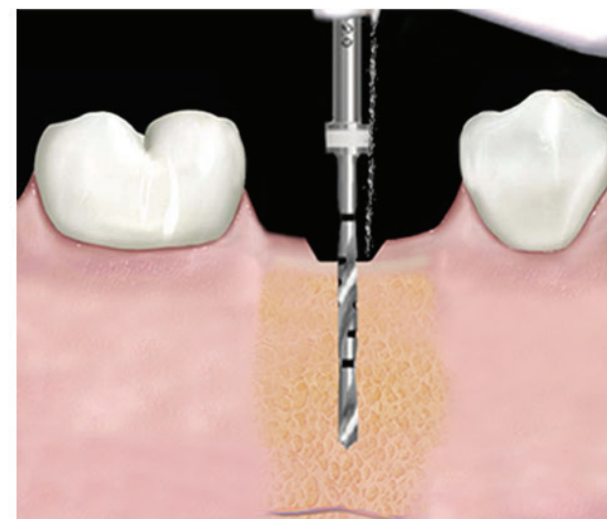
DRM19-300419 Ø 1.9 mm L 36.5 mm

Trephine Drill



DRTB-303040 Outer Ø 4 mm Inner Ø 3 mm L 16 mm
DRTB-304050 Outer Ø 5 mm Inner Ø 4 mm L 16 mm
DRTB-305060 Outer Ø 6 mm Inner Ø 5 mm L 16 mm

Pilot Drills: Long & Short



DRP20-300420 Ø 2 mm L 36.5 mm
DRPS20-400020 Ø 2 mm L 30.5 mm

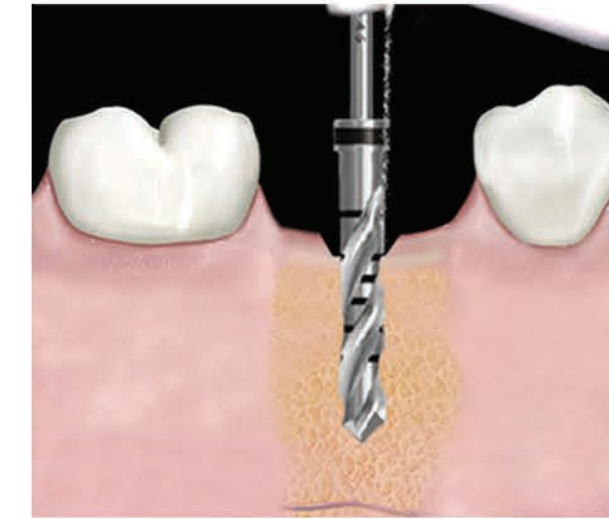
Drill Extender



DREX-300500
L 29 mm

SURGICAL CARBON COATED DRILLS

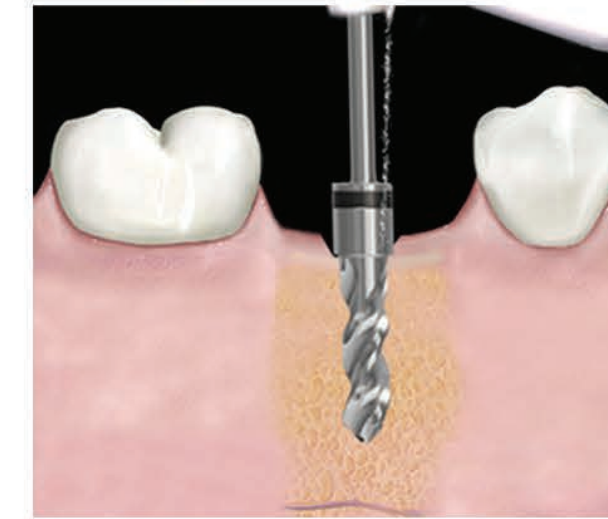
Twist Drills: Long & Short



DRT25-300425 Ø 2.5 mm L 36.5 mm
DRT28-300428 Ø 2.8 mm L 36.5 mm
DRT32-300432 Ø 3.2 mm L 36.5 mm
DRT38-300438 Ø 3.8 mm L 36.5 mm
DRT45-300445 Ø 4.5 mm L 36.5 mm
DRT50-300450 Ø 5 mm L 36.5 mm
DRT55-300455 Ø 5.5 mm L 36.5 mm

DRTS25-400025 Ø 2.5 mm L 30.5 mm
DRTS28-400028 Ø 2.8 mm L 30.5 mm
DRTS32-400032 Ø 3.2 mm L 30.5 mm
DRTS38-400038 Ø 3.8 mm L 30.5 mm
DRTS45-400045 Ø 4.5 mm L 30.5 mm
DRTS50-400050 Ø 5 mm L 30.5 mm
DRTS55-400055 Ø 5.5 mm L 30.5 mm

Integral Stopper Drills



DPIS-200L06 Ø 2 mm L 6 mm
DPIS-200L08 Ø 2 mm L 8 mm
DPIS-200L10 Ø 2 mm L 10 mm
DPIS-200L11 Ø 2 mm L 11.5 mm
DPIS-200L13 Ø 2 mm L 13 mm
DRIS-250L06 Ø 2.5 mm L 6 mm
DRIS-250L08 Ø 2.5 mm L 8 mm
DRIS-250L10 Ø 2.5 mm L 10 mm
DRIS-250L11 Ø 2.5 mm L 11.5 mm
DRIS-250L13 Ø 2.5 mm L 13 mm
DRIS-280L06 Ø 2.8 mm L 6 mm
DRIS-280L08 Ø 2.8 mm L 8 mm
DRIS-280L10 Ø 2.8 mm L 10 mm
DRIS-280L11 Ø 2.8 mm L 11.5 mm
DRIS-280L13 Ø 2.8 mm L 13 mm

DRIS-320L06 Ø 3.2 mm L 6 mm
DRIS-320L08 Ø 3.2 mm L 8 mm
DRIS-320L10 Ø 3.2 mm L 10 mm
DRIS-320L11 Ø 3.2 mm L 11.5 mm
DRIS-320L13 Ø 3.2 mm L 13 mm
DRIS-380L06 Ø 3.8 mm L 6 mm
DRIS-380L08 Ø 3.8 mm L 8 mm
DRIS-380L10 Ø 3.8 mm L 10 mm
DRIS-380L11 Ø 3.8 mm L 11.5 mm
DRIS-380L13 Ø 3.8 mm L 13 mm
DRIS-450L06 Ø 4.5 mm L 6 mm
DRIS-450L08 Ø 4.5 mm L 8 mm
DRIS-450L10 Ø 4.5 mm L 10 mm
DRIS-450L11 Ø 4.5 mm L 11.5 mm
DRIS-450L13 Ø 4.5 mm L 13 mm

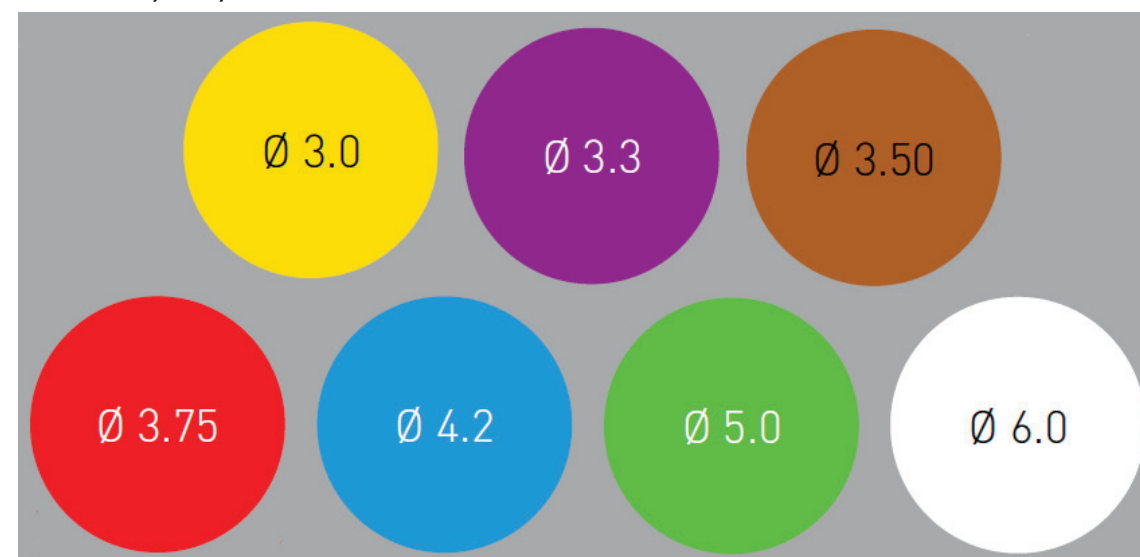
PACKAGING...



The dental implants are packaged in an ISO “Class 7” Clean Room in rectangular boxes allowing for convenient storage.

The color-coded seal on the top of each box allows for quick identification of the dental implant diameter and length.

The back label on the box includes the Implant Type, Catalog Number, Diameter & Length, Batch Code, Manufacture Date, Expiration Date and CE Mark. Each dental implant and cover screw are supplied in a sealed vial inside the rectangular box.



IMPLANT COLOR CODING

CUSTOMER SUPPORT...

WELCOME TO OUR WORLD OF PRECISION

Ditron Dental USA is a “doctor driven” company with guidance provided by our unparalleled group of advisory board members. We offer customer-centered service and support through our experienced team of sales professionals, customer service concierges and a website for dental professionals including our online store. We offer a broad range of educational and training events including our Clinical Champion mentoring program.

CUSTOMER SERVICE

Our customer service concierges are ready to help you Monday through Friday from 8 AM to 5 PM PST. They can assist you with a variety of services from answering product questions, taking your order or assist you with registering and navigating the online store.

You can reach our customer service concierges two ways:

- **844.4DI.TRON (434.8766)**
- **info@ditrondentalusa.com**

We look forward to assisting you and welcoming you to our Ditron Dental USA family.

RETURN POLICY & COMPREHENSIVE LIFETIME WARRANTY

Ditron Dental USA provides the Buyer indicated on the Order Form with a 30-day product exchange return right on any unmarked and unopened items for those items in which you can provide proof of purchase for same and return of same in original packaging. Return-Exchanges are subject to a 20% restocking fee.

Ditron Dental USA provides a lifetime warranty for all its dental implants and prosthetic components when used in accordance with the supplied Instructions for Use (IFU) and the company’s protocols.

For more detailed information regarding these policies, visit the online store or ask your sales professional or customer service concierge for a copy.

ONLINE STORE

All Ditron Dental USA dental implants, prosthetic components, surgical kits and instruments can be ordered online 24 hours a day, 7 days a week. Products are organized by category with filters to help you quickly locate the product(s) you require. There is a search tool if you aren’t search where to look. Easily add the products to your shopping cart including the quantities of each and check out. We provide 2-day standard shipping unless you need something next day for which there is an up charge.

All online orders are archived for easy lookup, review and printing while you are visiting the online store.

Not ready to place an order yet? Register online and one of our sales professionals and/or customer service concierges will contact you within 24 hours.

Visit: <https://order.ditrondentalusa.com/>

TRAINING & EDUCATION

We offer a variety of informational online webinars together with virtual and live hands-on courses.

Our Clinical Champions are located throughout the US and are ready to mentor you with product information, case planning and other clinical questions.

Visit: <https://ditrondentalusa.com/>

844.4DI.TRON (434.8766)



DITRON DENTAL USA
 555 Corporate Drive, Suite 150
 Ladera Ranch, CA 92694
 P: 844.4DI.TRON (434.8766)
 E: info@ditrondentalusa.com
 Online Store: www.order.ditrondentalusa.com/login
 W: www.ditrondentalusa.com



DITRON DENTAL
 Division of Ditron Precision Ltd.
 2 Haofe St. South Ind. Zone
 POB 5010 Ashkelon 78150 Israel
 P: 972.8.6711884
 E: info@ditrondental.com
 W: www.ditrondental.com



D I T R O N D E N T A L
 U S A

Ditron Dental is certified under EN ISO 9001:2008, SN EN ISO 13485:2012 MDD 93/42/EEC Annex II and is authorized to use the CE mark on all Ditron Dental products. All products are 510 (k) cleared by the FDA. All rights are reserved. Warning: Only a licensed dentist should use these products.

© DITRON DENTAL USA 2021
 Rev. A 210222